

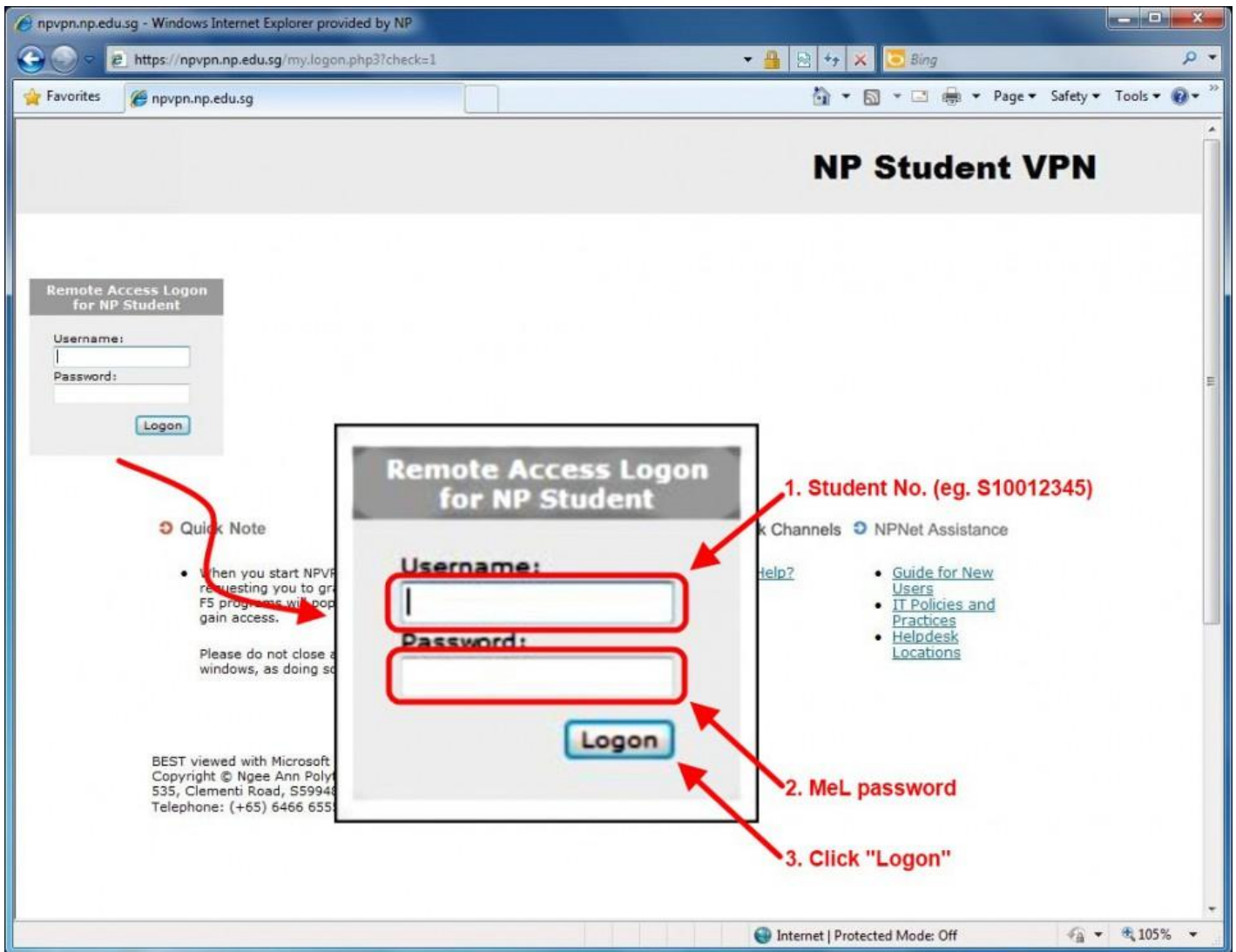


NP Student VPN on Internet Explorer

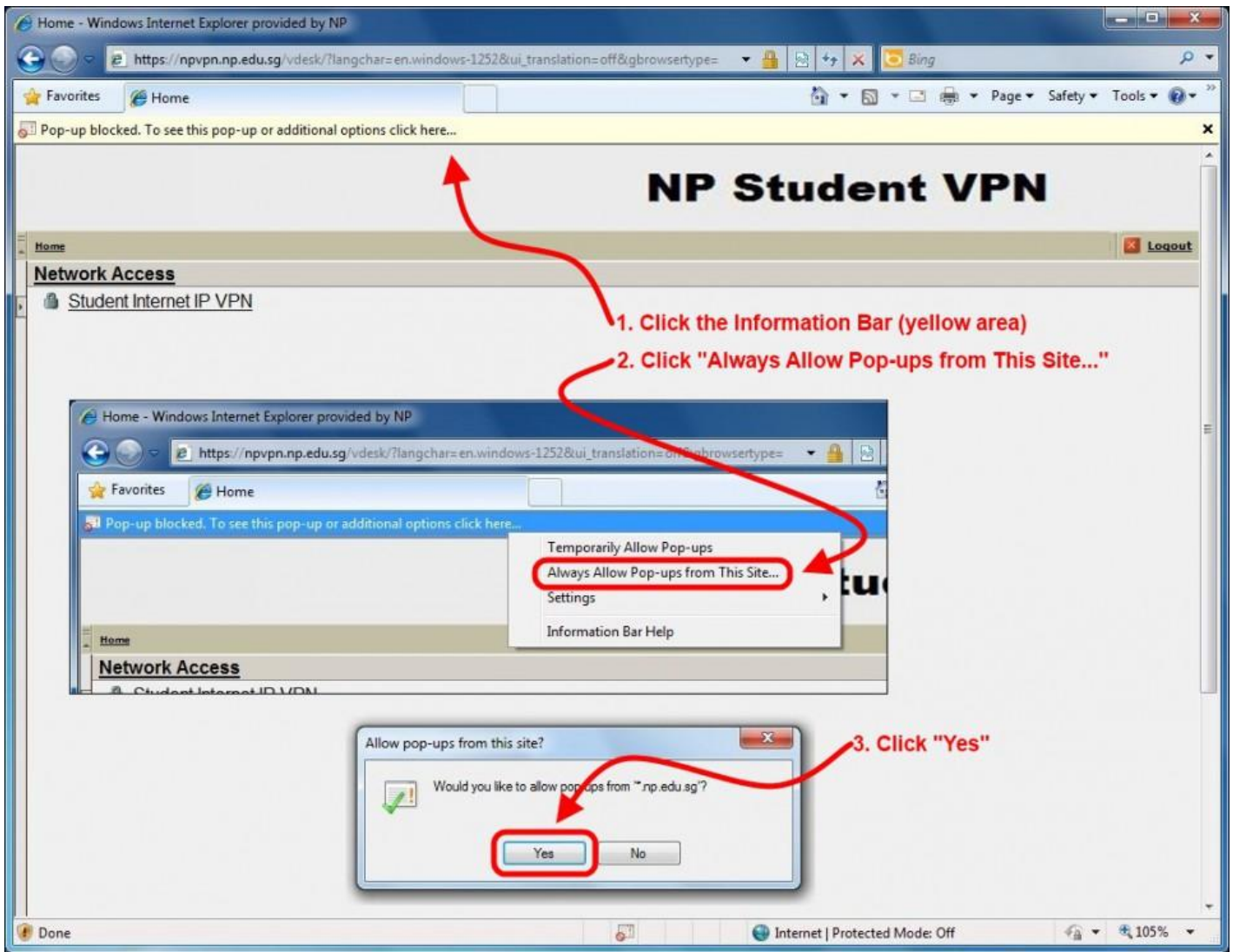
Step 1:



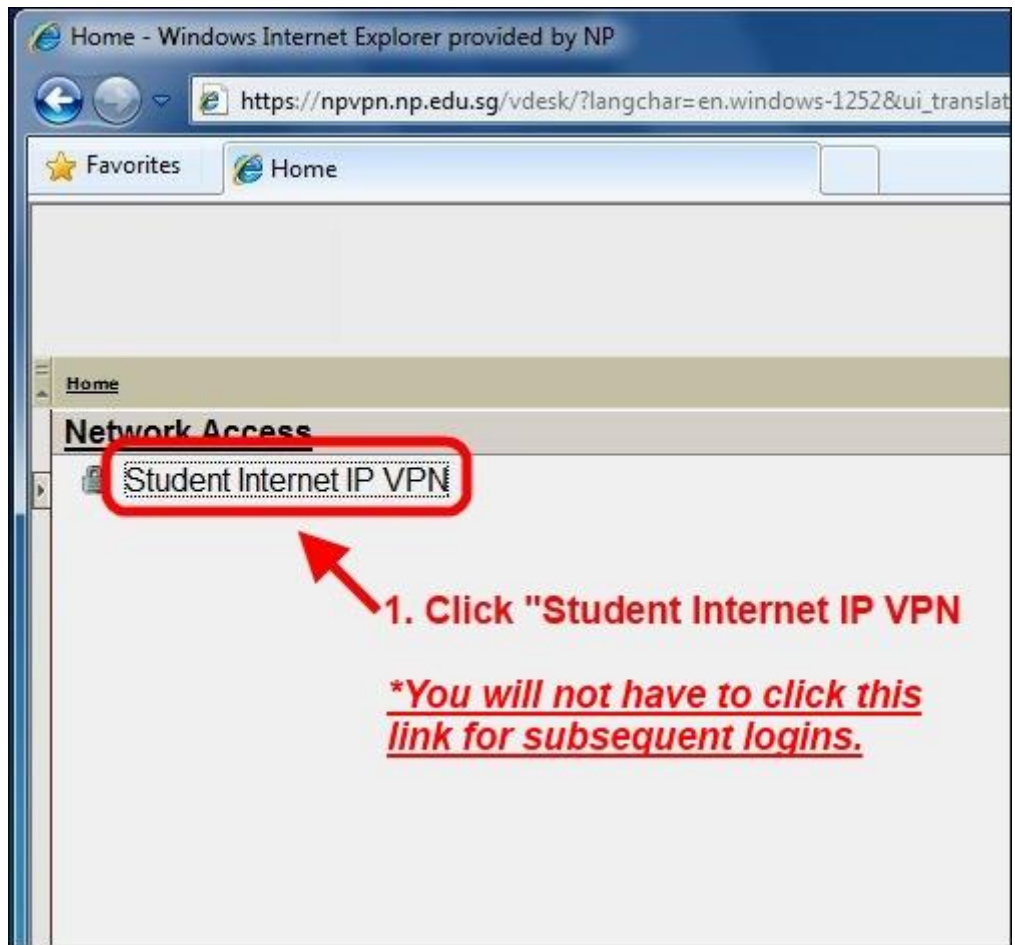
Step 2 :



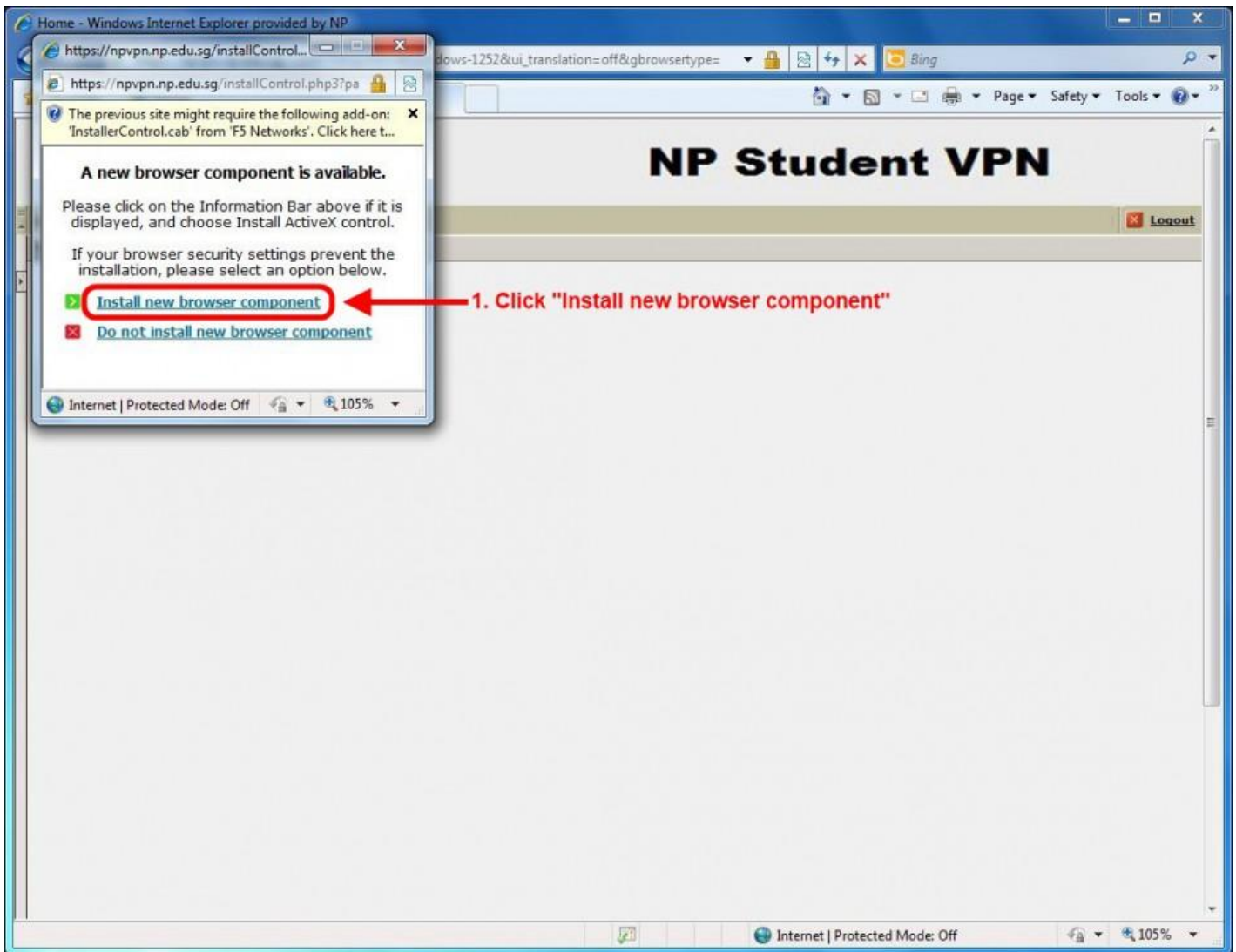
Step 3:



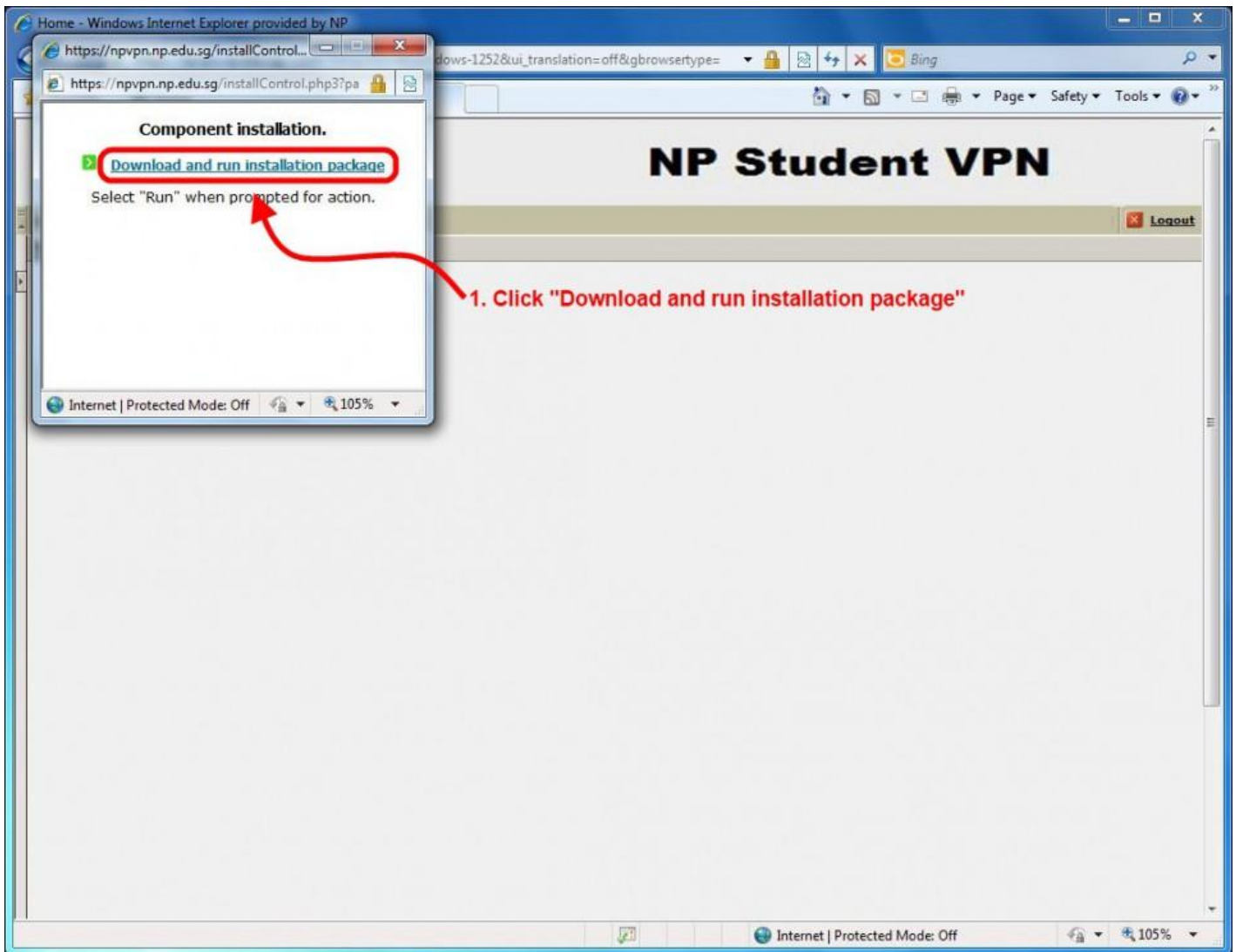
Step 4:



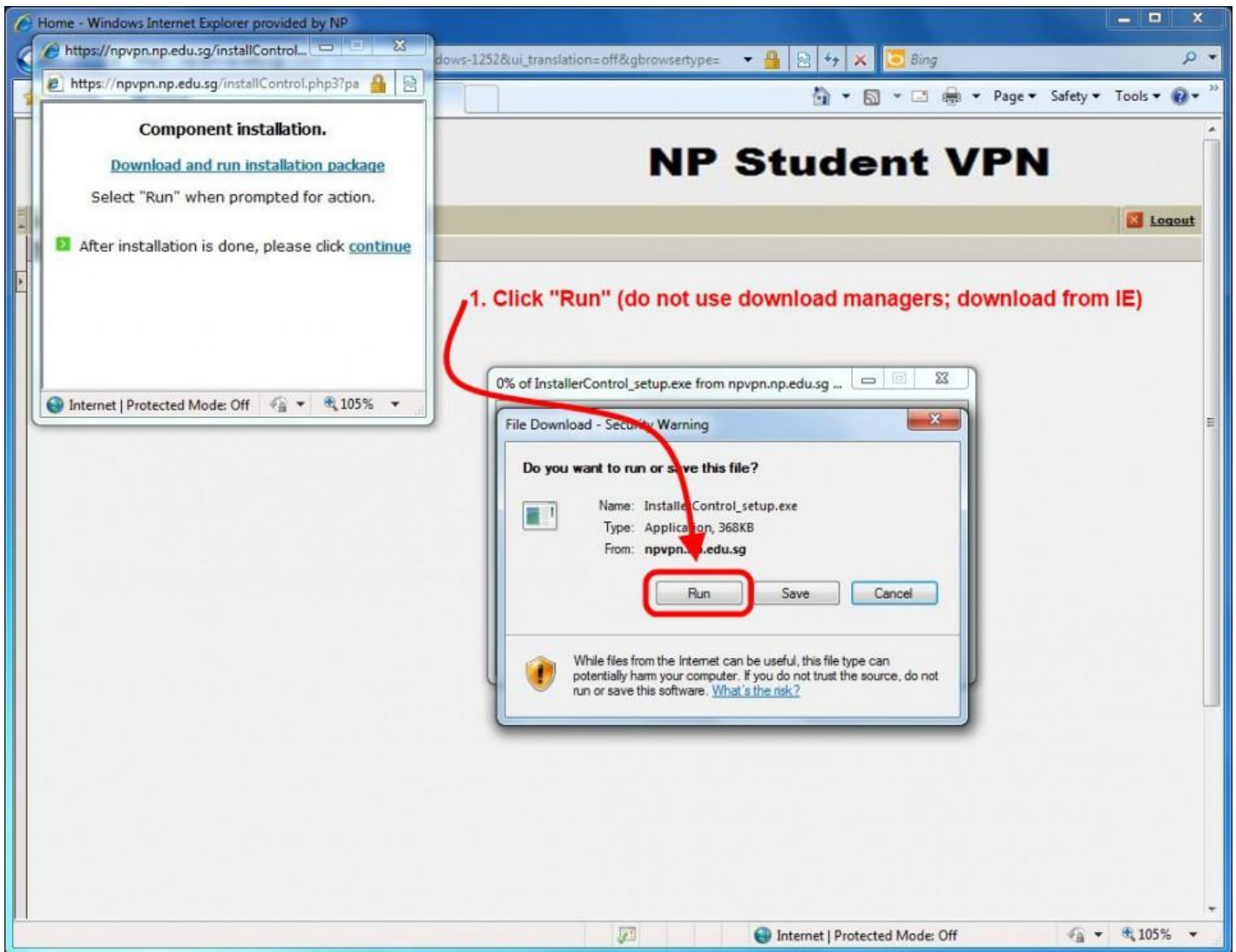
Step 5:



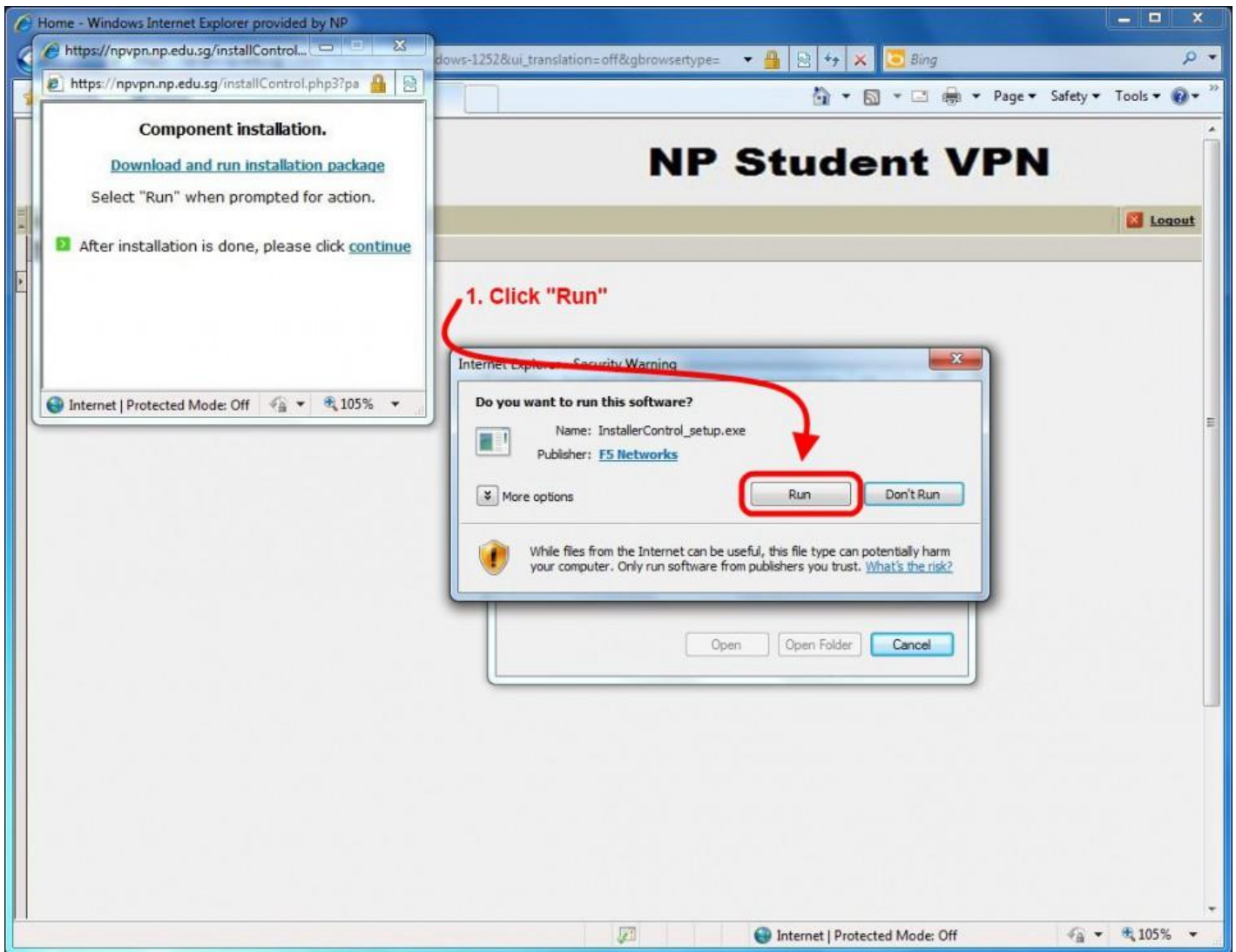
Step 6:



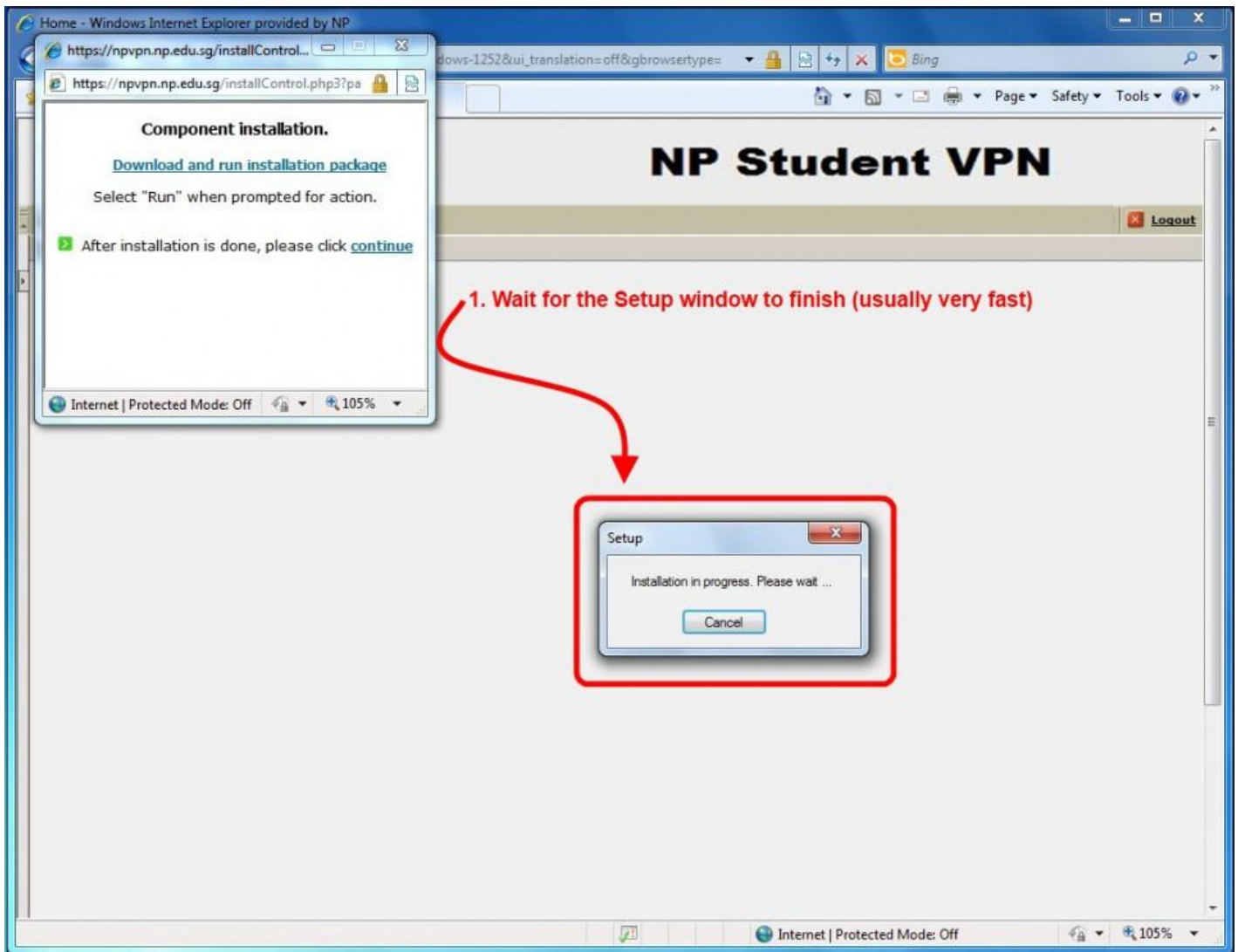
Step 7:



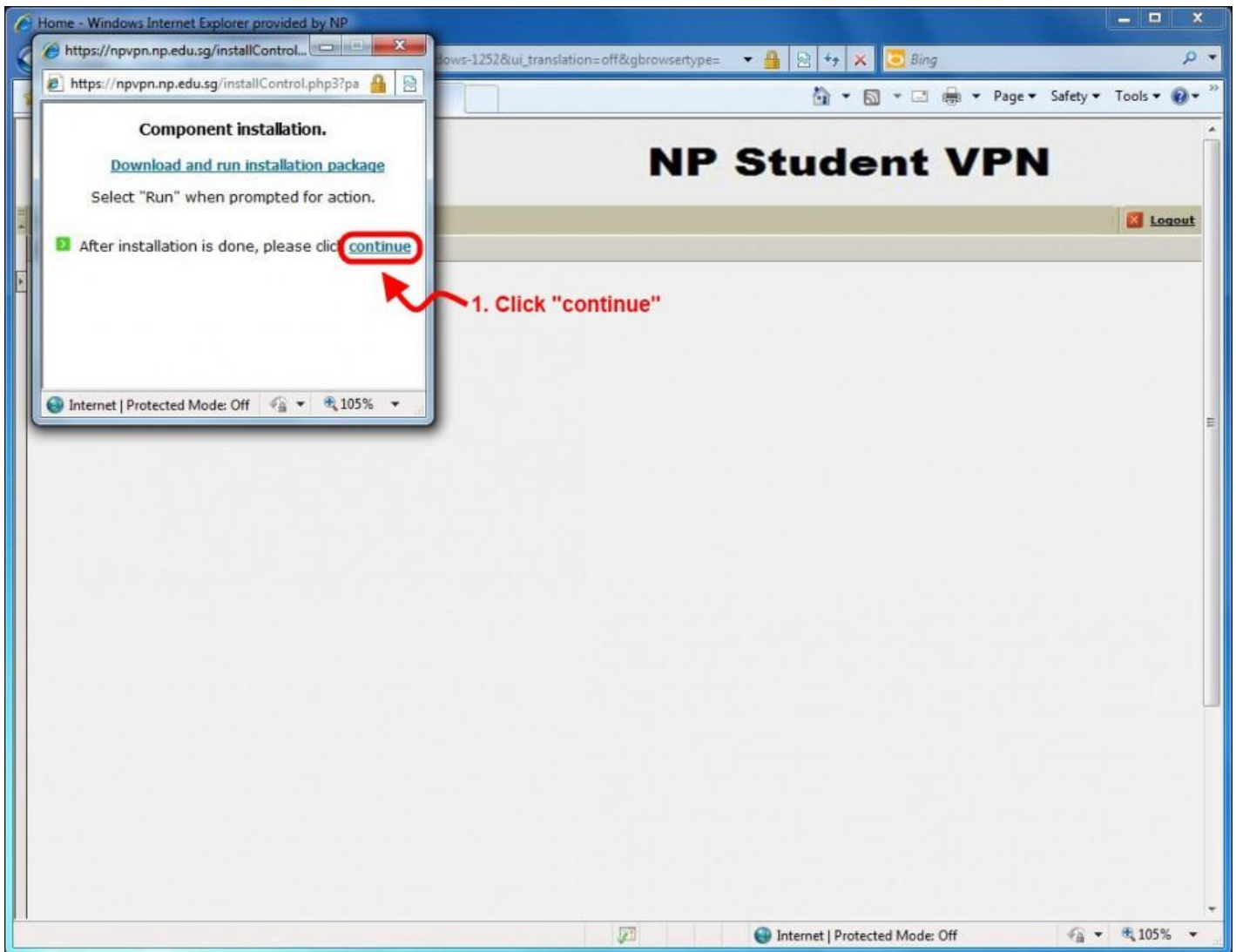
Step 8:



Step 9:



Step 10:



Step 11:

The screenshot shows a Windows Internet Explorer window titled "Home - Windows Internet Explorer provided by NP". The address bar shows "https://npvpn.np.edu.sg/vdesk/vpn/connect.ph". The main content area displays "NP Student VPN" with a "Logout" button. A "Student Internet IP VPN" popup window is open, showing "Status: Loading... 99%". A red arrow points from the "Status" text in the popup to the first item in a list. The system tray at the bottom right shows a clock at 2:52 PM on 3/3/2011 and a circled "F5" icon. A red arrow points from the "F5" icon to the text below.

1. "Status" notification will cycle through:

- 1.1. Queued
- 1.2. Loading...[% value]
- 1.3. Connecting
- 1.4. Authenticating...
- 1.5. Finalizing...
- 1.6. Connected

2. This popup window will minimize by itself

**Do not close either of these two windows*

**You will notice an "F5" icon on the system tray
This is an NP Student VPN component.*

Congratulations!

Your NP Student VPN session is successful!