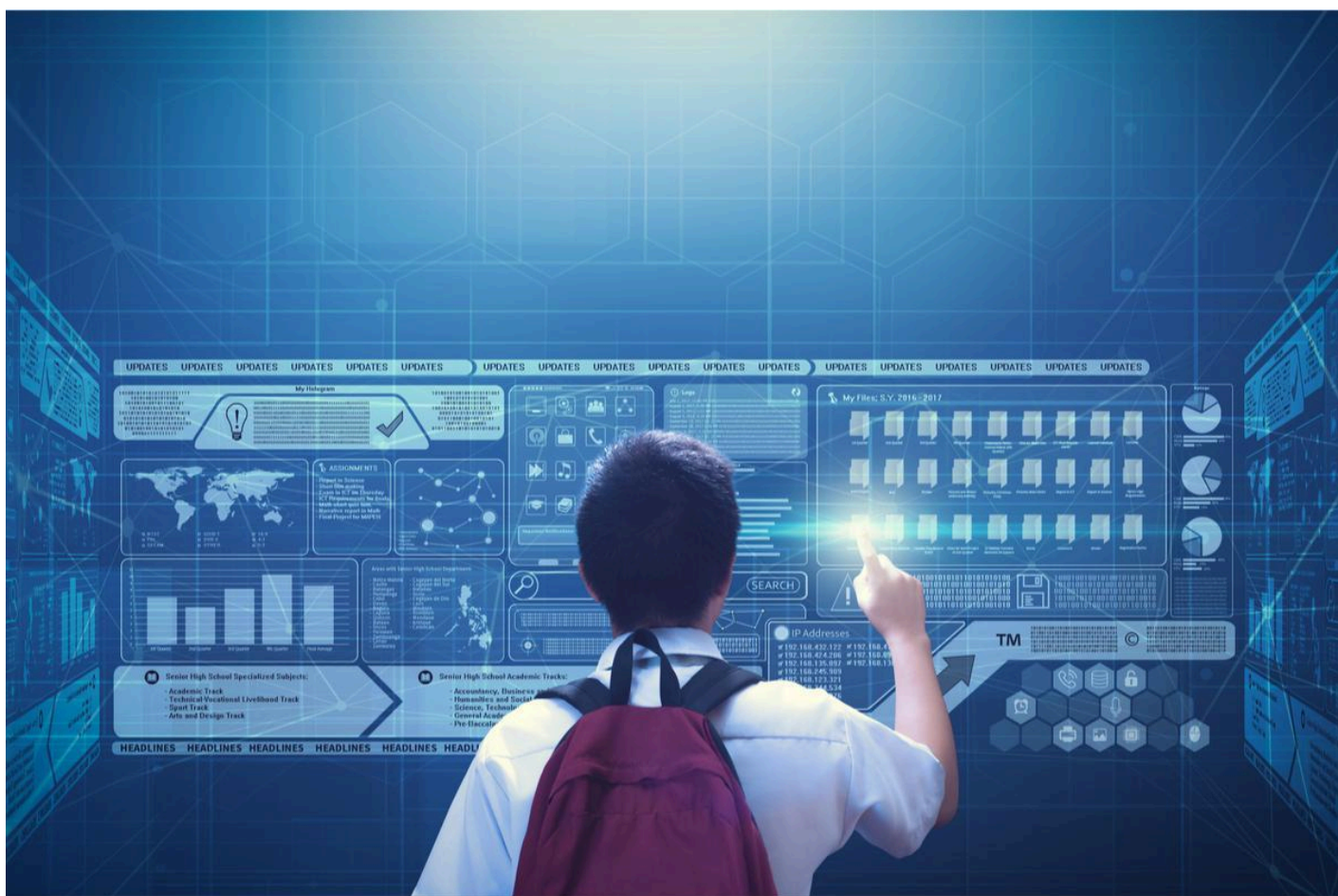




Top School Management Software for Educational ERP Solutions

Educational institutions today are leveraging technology to improve administrative efficiency and enhance the student learning experience. The best school management software solutions are designed to address these needs by integrating multiple functions into a unified platform. These Educational ERP (Enterprise Resource Planning) systems offer comprehensive tools for managing school operations, including student enrollment, attendance, grading, communication, and financial management.



A top-notch school management ERP streamlines daily administrative tasks, allowing staff to focus more on education rather than paperwork. It automates processes like fee collection, payroll, and examination management, reducing manual errors and saving time. These systems also offer real-time data access, ensuring that teachers, administrators, students, and parents stay updated on essential information such as grades, attendance, and school announcements.

Additionally, Educational ERP platforms enhance parent-teacher communication through portals that allow parents to track their child's progress and receive timely updates. This creates a collaborative environment and fosters better student performance. Customizable dashboards and reporting tools help educators make data-driven decisions, improving resource allocation and academic planning.

Moreover, the best ERP software supports cloud integration, making it accessible from any device, ensuring data security, and facilitating remote learning solutions. With scalability, these systems can cater to institutions of all sizes, from small schools to large educational networks.

In conclusion, school management software with [Educational ERP](#) features is essential for modern schools aiming to optimize their operations and provide an enriching educational experience. By simplifying tasks, improving communication, and offering valuable insights, these solutions are transforming how schools operate.