



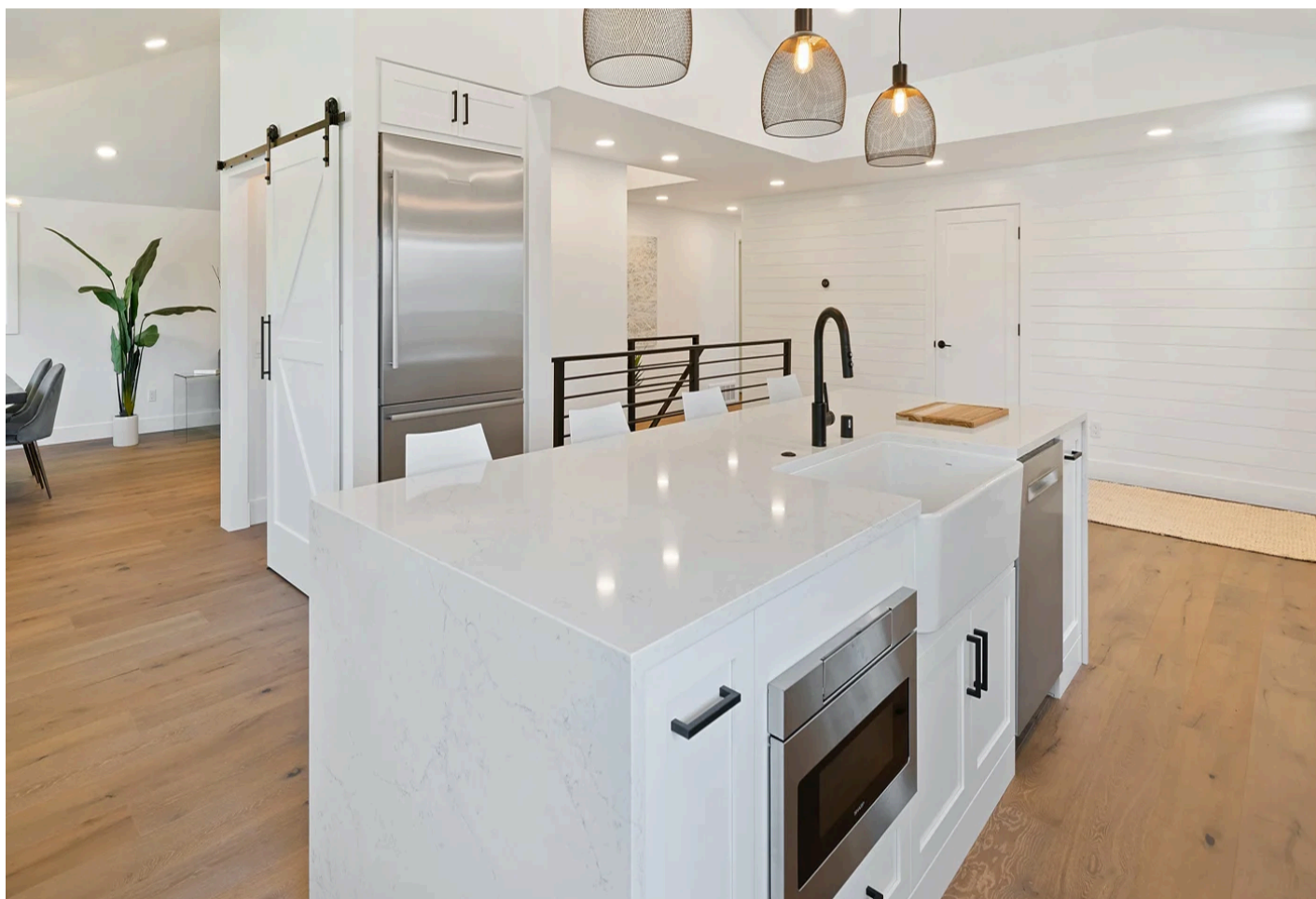
Bianco

[Bianco Merino Quartz for Kitchens and Bathrooms](#)

[BATHROOM](#) | [KITCHEN](#) | [MATERIALS](#)

4 minute read

work-tops.com



Product Name: Bianco Merino Quartz

Nature: Engineered Stone

Colour: White

Pattern: Black & Grey veins

Non-Porous

Highly durable

Highly slip resistant

Low heat resistivity

Sealing- not required

Low maintenance category

Suitable for: Indoor use (best for kitchen, bathroom and high traffic zones)

Bianco Merino Quartz, an engineered stone, is manufactured to be highly durable and sturdy. They make ideal solutions for use in busy places like kitchens. Suitable applications include kitchen countertops, kitchen islands, worktops, splashbacks, window sills, worktop upstands, bathroom vanities, shower walls, shower tubs, bathroom floors, and stone kitchen flooring for commercial places etc. However, this quartz worktop is not suitable for outdoor worktops or any kind of exterior projects.

Even though worktop sizes are different from individual to individual, it generally requires buying an entire slab for worktop installation. Not all of the slab will be utilized and some portions will definitely be left out. Instead of discarding the left out slabs after the completion of bigger projects like bathroom and kitchen renovations, you can try utilizing the worktop offcuts for productive purposes. If you do not feel like you're in an artistic mood, you can even try selling the remnants or donating them. If you are a trade member of the stone or kitchen industry, you can sell them by listing them on our [Remnants page](#). We do not charge any money for displaying the remnants. What one person considers worthless may be of great value to another. We can all contribute towards a healthier environment in ways we can, with these little efforts.



Creative Ways to Utilize Quartz Off-Cut

Charcuterie board, cocktail tables, stacked stone indoor fountains, stools, tea coasters, beermats, etc.

Bianco Sinks

Sinks made of quartz are naturally soundproof, making them significantly quieter than sinks made of steel and other materials. There will be a noticeable reduction in both the sound of the water coming from the taps as well as utensils clanging on the sink.

What is a Better Work-top Width; 30mm or 20mm Quartz Worktop?

Sink and hob support: 30mm quartz worktops give superior sink and hob support than 20mm worktops. Because 30mm quartz worktops are more robust, tougher, and stronger than 20mm worktops, they can easily handle any size kitchen hob or sink.

Few Design Ideas

Bianco Merino Quartz can be paired up with a wide range of colour combinations to create a different aesthetic every time.

- **Nicely Neutral**

White being a compatible option for almost everything, you can pair your white kitchen worktop with other neutrals like black, grey, beige or even whites again. Pairing with lighter neutrals is especially beneficial if you have a smaller room and are looking for creative ways to make your kitchen look spacious. The light is also reflected well, thus making your space look bright and beautiful.



- **Blue Cabinets**



-
- Navy blue or any subdued hues like dusty violet with a mauve undertone are quite on-trend for kitchen cabinets and look great with white polished countertops. You can also try combining different colours of blue. Lighter tint on major features such as cabinets, walls and backsplash. Then add deeper blues with rugs, chairs, dishware, or window treatments. To avoid clashing, make sure the blues have comparable undertones. White with Blue will not only make your space timeless but also add a calming and cooling effect to your kitchen.

- **All White Kitchen**



Consider going all white with everything from the cabinets, white worktops, kitchen splashbacks and dining chairs. To cut on the monotone, include a wooden table in the centre that works as a kitchen island for prepping as well as dining. You can plan out your budget for the quartz worktop using our [worktop price calculator](#), one of the best in the UK.