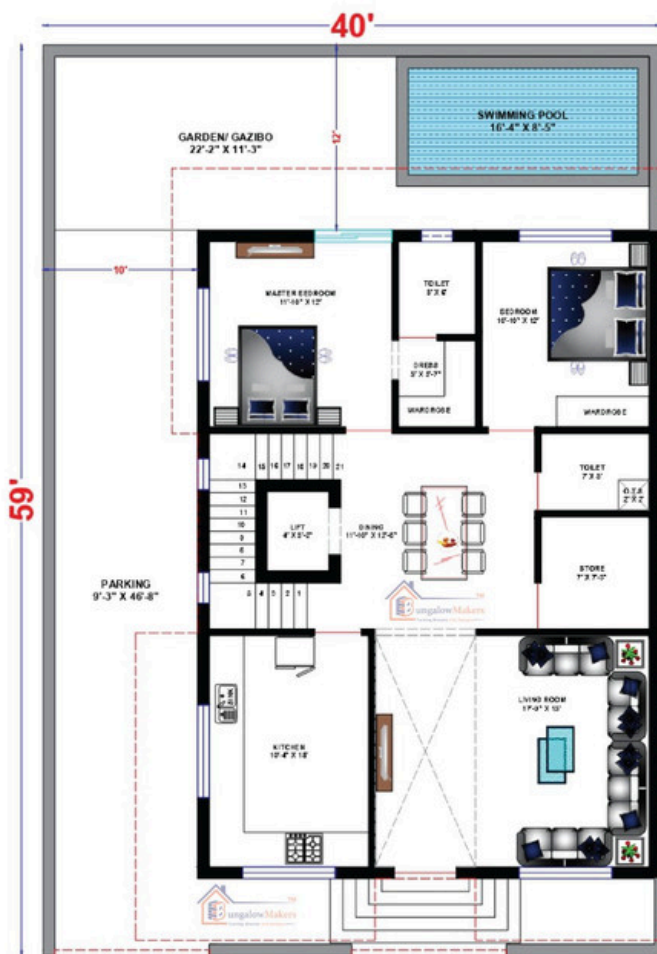




40x59 house floor plan - 2360 sq. ft. House Naksha

Have A Look at 40x59 house floor plan offers a well-balanced layout with spacious living areas, functional rooms, and efficient space utilization. This 2360 sq. ft. house design is ideal for both modern and traditional homes, featuring well-planned bedrooms, a stylish kitchen, comfortable living and dining areas. Whether for a single-family home or a duplex, this floor plan ensures maximum comfort, smart space planning, and aesthetic appeal.

Visit Us: <https://www.bungalowmakers.com/>



GROUND FLOOR PLAN



FIRST FLOOR PLAN