

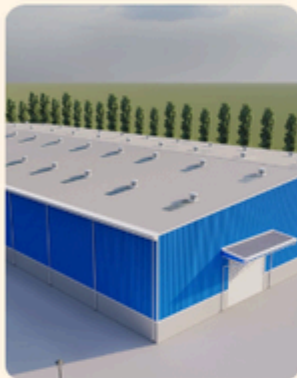


Components of Pre Engineered Building

PEBs, also known as pre-engineered buildings, are cool steel structures that are designed and built in factories. These buildings are awesome because they're not only cost-effective, but they're also super quick to put together. Plus, they're really versatile and can be used for all sorts of different things.

COMPONENTS OF PRE-ENGINEERED BUILDING

PEBs are modern steel structures designed and fabricated in factories. These buildings are cost-effective, quick to construct, and versatile for various applications.



Primary Components

The main frame of a Pre-Engineered Building consists of columns, rafters, and girts. Columns are the vertical members that support both the roof and walls. Rafters, which are horizontal members, connect the columns and provide support for the roof. Girts are horizontal structural members that connect the columns and offer support to the wall panels. Together, these components form the primary structural system of the building.

Secondary Components

In Pre-Engineered Buildings, purlins are crucial horizontal beams that support the roof panels and transfer loads to the main frame. Eave struts, positioned where the roof meets the wall, provide essential support to both the roof and wall panels. Additionally, bracing components such as rod bracing, cable bracing, or portal frames ensure stability against lateral loads from wind and seismic forces, enhancing the building's overall resilience and safety.



Cladding Components

Roof panels, often made of metal, cover the roof of Pre-Engineered Buildings, providing protection and durability. Similarly, wall panels, also commonly made of metal, cover the building's walls. Insulation materials such as fiberglass or foam are used to provide thermal resistance, ensuring energy efficiency and comfort within the building.

Miscellaneous Components

Fasteners, including bolts, screws, and other hardware, are essential for assembling the building. Flashing consists of thin pieces of material that prevent water penetration at joints, ensuring the building remains watertight. Trim provides finishing touches at edges and corners, serving both aesthetic and functional purposes by enhancing the building's appearance and durability.



About Kamdhenu Build Tec

Kamdhenu Build Tec PEBs are steel structures built over a structural concept of primary members, secondary members, roof & wall sheeting connected to each other & various other building components.

<https://www.kamdhenulimited.com/Pre-engineered-buildings.php>