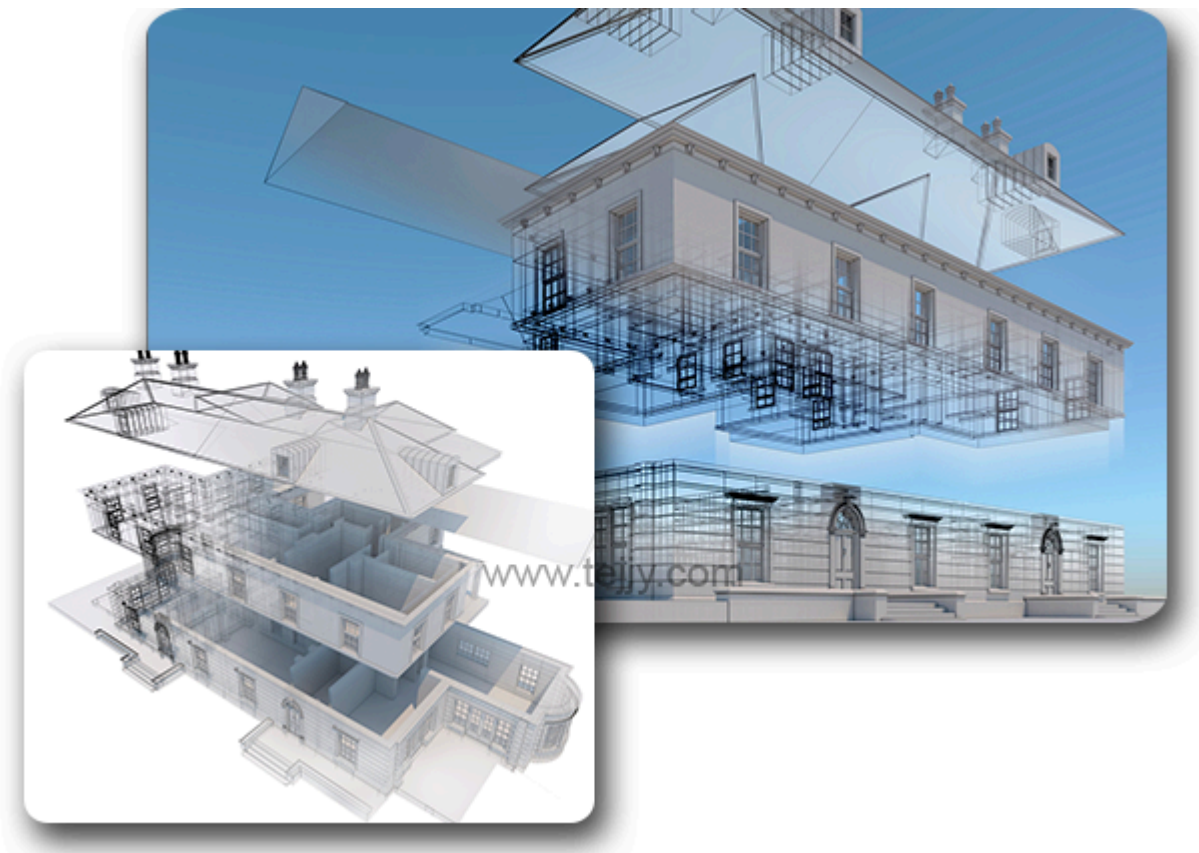




## What is as-built documentation?

Drawings or 3D data sets that show a building exactly as it was constructed are known as "[as-built documentation](#)." Any alterations, extensions, and other changes made throughout the building process are included in an as-built data collection. Any alterations, extensions, and other changes made throughout the building process are included in an as-built data collection. The building components, such as the facade, doors, windows, and structural systems like pipes, ducts, and cables, will also be included, along with their precise measurements and survey locations.



### Why are as-built records required?

There is no perfect match between the design model and the completed construction. This occurs as a result of a variety of practical difficulties such as shifting budgets, constrained schedules, and "surprises" that call for redesigns and rework. Even the most efficient construction process—as well as the most sophisticated **BIM** or **VDC methodology**, will result in a structure that deviates from the original plan.

## What is the purpose of as-built documentation?

For your AEC clients, [as-built documentation](#) can be used for a variety of purposes, such as:

- **General contractors**, require current records to show that they completed the contracted job according to the required requirements
- For detailed upkeep, operational tasks, and occasionally advanced simulation, **building owners** and **facility managers** need access to all the building's historical data, from the original design to its current condition.
- Future users of the building, like **contractors**, also need accurate **as built measurements** and schematics.

If you need **3D BIM models** for their **as-built capture** or accurate [as-built drawings](#), contact one of the top BIM consultants in USA.