



What are the precautions when building a steel structure factory?

[Steel structure factory](#) With the continuous development of technology, the complete range of products and the continuous optimization of quality, various types and specifications of steel have appeared, giving steel structure factory a variety of choices. So, what are the precautions when building a steel structure factory?

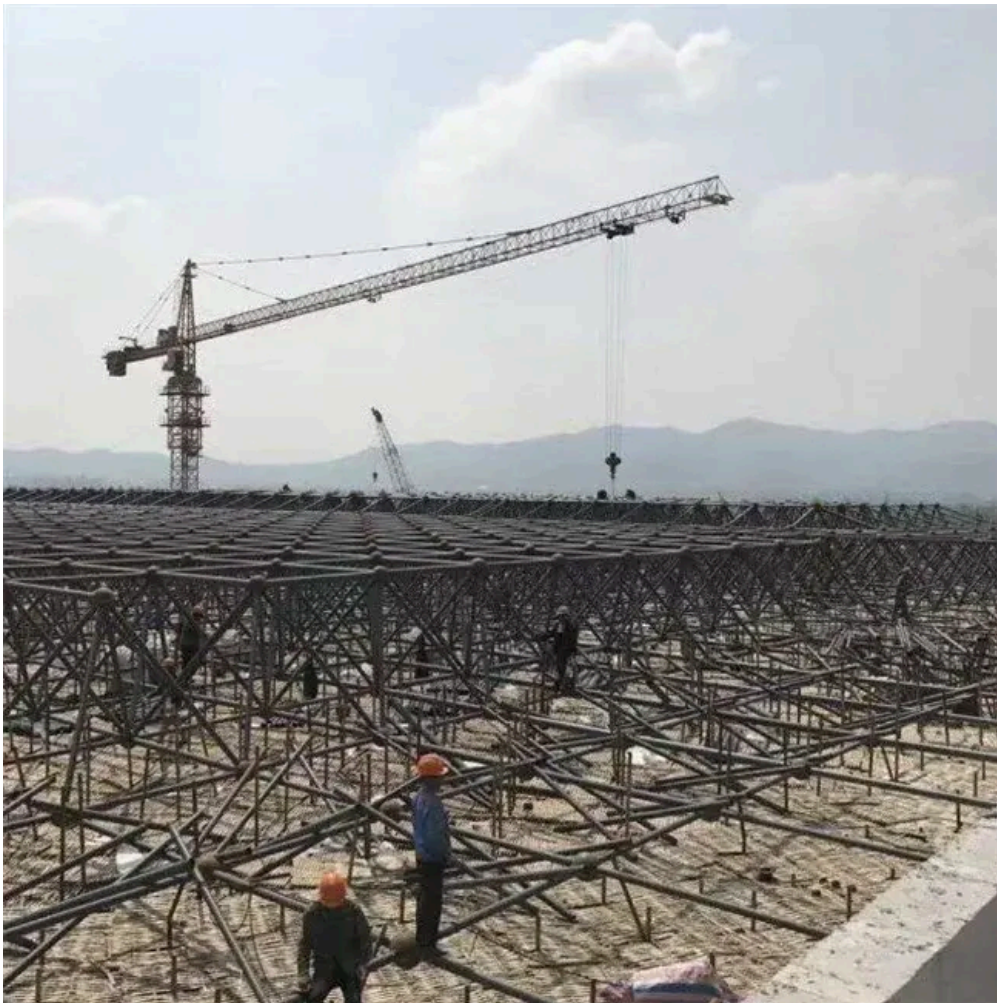
1. Strictly control materials

The variety, specification, model and quality of steel must comply with the design requirements and the relevant national product standards, and must be randomly sampled and retested. It can only be used after passing the retest. It is also necessary to select matching welding rods, welding wires and fluxes with factory certificates according to the steel grade.

2. Component assembly deviations

Components are prone to deformation during transportation and stacking. Flexural deformation after lifting may also be caused by accumulated errors during installation, resulting in deviations in component assembly. Therefore, effective protection measures need to be taken when components are loaded and transported:

- The stacking of unloading trucks must be leveled, and the lifting positions of large components need to be calculated and confirmed;
- After discovering deviations, find out the reasons in time and make adjustments;
- If excessive deviation is found during the installation process, forced correction or random hole expansion is strictly prohibited, and technical remedial measures need to be taken.



3. Pre-embedded anchor bolts

Pre-embedded anchor bolts are a key work item in building a steel structure factory, and the steel structure company must be required to prepare a special construction plan.

4. Steel structure connection

A steel structure factory is a structure in which components or parts are made of steel (profiles, plates) and then connected using connection methods. The quality of the connection will directly affect the safety of the steel structure factory. Choosing the correct connection method and reasonably designing the connection form is an important part of the installation.

Reasonable connection design needs to comply with the principles of safety and reliability, simple structure, clear force transmission, convenient construction and saving steel.



5. Strictly control the quality of personnel

Welding, rivets and bolts are mainly used to build steel structure factories. It is necessary to focus on checking the technical qualification certificates and operational safety certificates of special types of work such as welders and crane workers, and check the qualifications and validity period of the certificate issuing unit. At the same time, the project department is required to establish a quality assurance system, implement a three-inspection system, and have technical personnel hold certificates to work.

Steel Structure Factory Solution - FASECbuildings

[FASECbuildings](#) focus on the 2D/3D Modeling Design & Construction of various steel framed buildings, structural steel construction and building-related products supply like glass windows/doors, glass curtain walls etc.

Under support of structural giant KNSN Group, FASECbuildings received a lot of foreign projects from project Engineering, Fabrication, Construction, Logistic and Installation Guidance etc. and become more professional in foreign project operation, specially in US-EU standard engineering and project management aspects.

KNSN Group is an extra grade enterprise of China's steel structure manufacturing, has the Grade I professional contracting qualifications in terms of steel structure, Grade B special design of steel structure, Grade I qualifications in terms of general contracting of house building and Grade III professional contracting qualifications in terms of groundwork, foundation work and the metal window and door engineering.

Please contact us for your steel structure workshop design and construction solutions, we assure that our products will satisfy your needs with designs, competitive performance price ratio and best services.