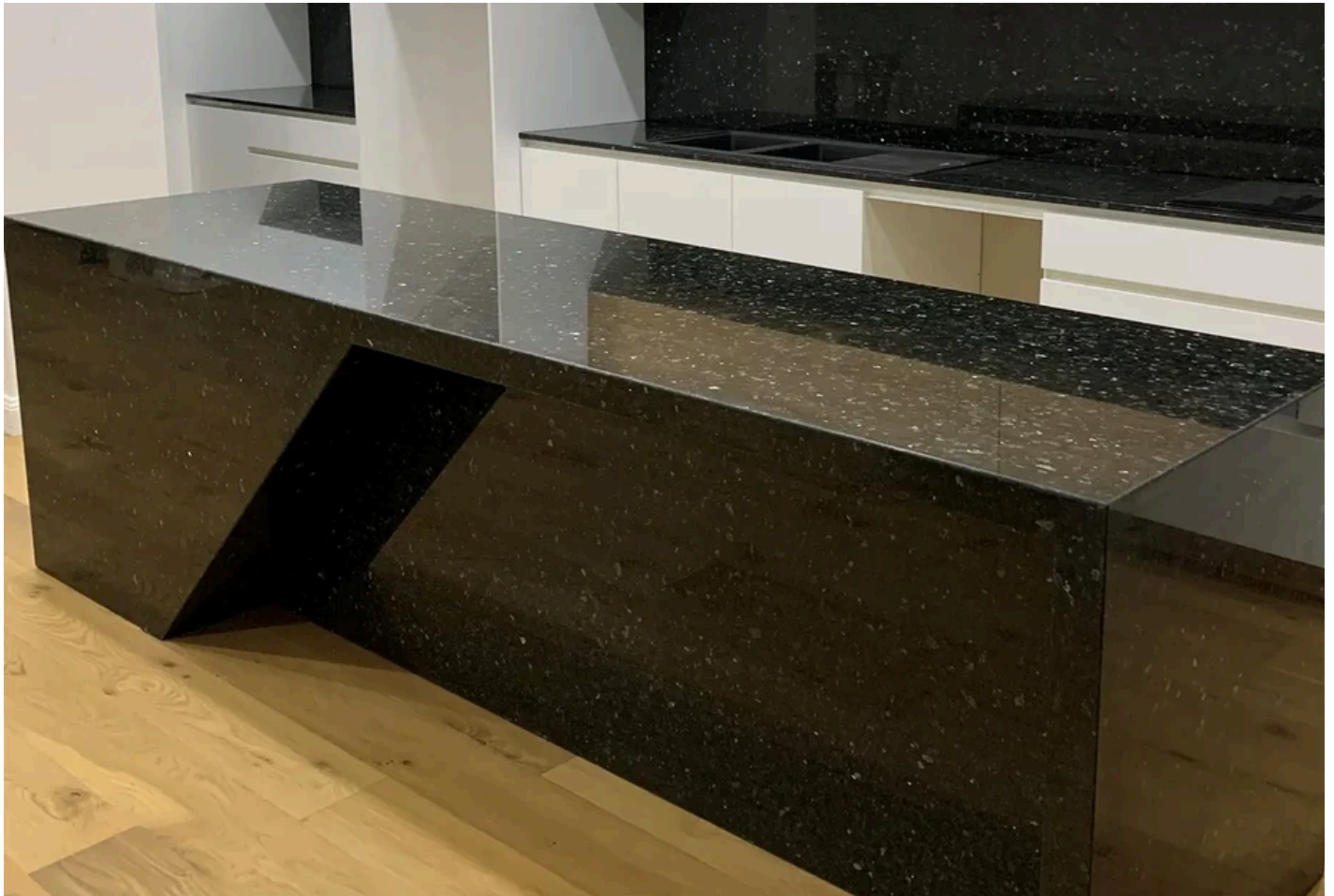




## [Emerald Greens; Luxurious yet Practical Choice for Kitchens](#)



You can now incorporate the sparkly magic of emerald greens in your kitchen space with your worktops. A black-green granite named Emerald pearl can now make this happen. Let's learn about this stone then.

Stone name: Emerald Pearl Granite

Core material: Granite

Nature: Natural Stone

Origin: Norway

Colour: Dark green

Pattern: Crystal speckles

Water Resistivity: High

Maintenance type: Low

Synonymous Names: Labrador Gold, Nordic Ice, Perla Smeralda, Labrador Green, Emerald greens, Green emerald pearl, Sparkly green granite, Glittery green emerald, Crystallised green granite



## Description of Today's Green Work-top Granite

Emerald Pearl Granite is a luminous, dark green mineral. Worktops made of Emerald pearl granite feature a dark green base with various lighter flecked, crystallised emerald greens, embedded in it. Renowned for its astounding beauty, this glimmering stone is a popular choice among interior designers.

## Benefits of Emerald Green kitchen

- Unique look
- A practical choice for high-end kitchen style
- Highly durable
- Varied range of thicknesses

- Increases home's resale value
- Masks stains and scratches

### **Emerald Green's Different Work-top Thicknesses:**



20mm worktops and 30mm worktop are the most readily available thicknesses for Emerald Pearl Granite. However, some marketers even manufacture worktops of 40mm and 50mm worktop.

#### **20mm Worktops:**

Thin edges of these emerald greens worktops are best suited for contemporary theme kitchens. They make kitchens look sleek and modern. 20mm slabs are also used for granite backsplashes, kitchen islands, kitchen upstand ideas, kitchen windowsill, garden paths, borders, etc.

#### **30mm Worktop:**

These worktops are best suited for classic kitchens or worktops which are designed for traditional settings. They are used for bathroom vanity sink tops, kitchen sink with taps, and

countertops with hobs, among many others.

### **Worktops of 40mm and 50mm Worktop:**



**50 MM**



**40 MM**

These are one of the thickest worktop profiles rarely available for natural stones which are usually manufactured only upon receiving customised orders. These thicknesses are more common for laminate worktops, wood worktops, and also [quartz worktops](#). Any homeowner looking to install 40mm worktops or even thicker ones like 50mm worktop must know that the base or foundation on which the worktop sits must be extraordinarily strong and durable to bear the load of it and to avoid accidents.

## **Other Ways to Incorporate Emerald Greens in your Kitchen**

### **Emerald Greens - Under-Mounted Sinks:**



Add a luxurious touch of emerald greens to your kitchen with under-mounted sinks. As your bowl of the sink will be fitted under the granite countertops, there will be fewer chances of moisture attacking the emerald green's beauty. However, it is recommended to ensure that your granite countertop is properly sealed before installing as well as regularly carried out post installments. Granite worktops are still much better water-resistant than [marble worktops](#), though.

**Emerald Green Breakfast Bar in a Kitchen:**



Quite similar to a freestanding island for the kitchen, a breakfast bar in the kitchen will add more counter space and even create additional storage space. Surrounded by emerald greens, your breakfast bar will not just be a functional space, but also be a source of soul rejuvenator. [Enquire from your fabricator](#) about creative and stylish worktop edges. Curved worktops as breakfast bars will definitely be a style statement in your kitchen space.

**Emerald Greens - Splashback for Kitchens:**



Protect your kitchen walls from moisture and heat damage by installing worktop splashback and sink splashbacks. Emerald greens can be used either in slab format as well as in the form of granite tiles for different splashback ideas. 20mm granite slabs are the preferred choices for granite splashbacks. Trust me, your emerald green kitchen walls will create such an aura that you will keep looking for excuses to visit your cooking place.

You are just one text away from getting your Emerald green kitchen complete. Browse the stone and [add it to cart](#) already. With Work-tops, your kitchen renovation will be extremely budget-friendly. For queries, do not hesitate to reach us at [info@work-tops.com](mailto:info@work-tops.com)