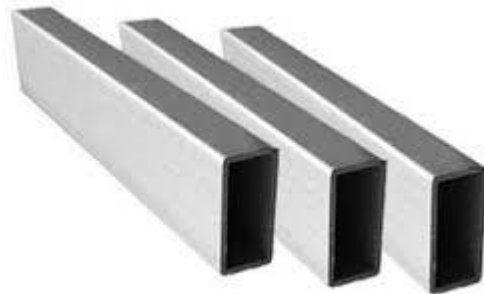




## A guide to SS 316ti Pipe

SS 316Ti Tubes is essentially a 316 derivative in the same way as 321 is related to 304. Stainless Steel 316Ti Seamless Pipes are similar to 316L but have more excellent resistance to high temperatures and mechanical strength. These SS 316Ti Seamless Pipes (UNS S31635) are more resistant to general corrosion and pitting/crevice corrosion than traditional stainless steels like 304. The stabilized Stainless Steel 316Ti Welded Pipes can be used for high-carbon applications.

Like 316, it can be used at higher temperatures. Purchase Grade 316Ti Stainless Steel Pipes from us at a fair cost. This 316Ti Stainless Steel Tubing contains a small amount of titanium – usually just 0.5 percent. Although it also has many other 316 grade characteristics, the inclusion of titanium helps Stainless Steel 316Ti EFW pipes to be shielded from precipitation at elevated temperatures, even with extended exposure. In the meantime, for high-temperature stability, 316L has almost the same amount of Titanium as Stainless Steel 316Ti ERW pipes but also contains Molybdenum.



### A bit more about SS 316ti Pipe

316Ti Stainless Steel Tubes are the grade of choice for applications in the temperature range up to approximately 900 degrees C. Stainless Steel 316Ti Tubes combine high strength, phase stability, and scaling resistance in combination with corresponding corrosion resistance. Stainless Steel 316Ti Tubes is a Stainless Steel 316 modification with a higher carbon content to have increased high-temperature resistance. In SS 316Ti Tubing, elements with a lower percentage are added to improve strength and to harden capability and achieve special properties such as high-temperature durability, high yield, and impact results, and corrosion resistance.

[SS 316ti Tube](#) is a heat-resistant, titanium-stabilized, austenitic alloy typically used for operation in the temperature range 1000 Degree F-1600 Degree F. Alloy 316Ti Pipes is mainly used in applications requiring continuous and intermittent service temperatures within the 800 Degree F – 1500 Degree F carbide precipitation range. Alloy 316Ti Tubing is identical to Alloy 304 Tubing but with additional titanium of at least five times the carbon content.

### **Applications of SS 316ti Tube**

By being the supplier of 316Ti stainless steel pipe, we are renowned for the early delivery of goods and services, and thus each and every single pipe is independently inspected and tested so that there is no potential for any defects and export issues. 316ti Inox ERW pipe has a special material composition

### **Guide to [Alloy 20 Tube](#)**

The hardness of the AISI 316Ti pipe is that of Rockwell B Hardness 79 and Vickers Hardness 152. AISI 316Ti stainless steel has a hardness of Knoop 166 and a hardness of Brinell 146. The stainless steel AISI 316Ti can retain its durability and strength, even at temperatures below zero. AISI 316Ti stainless steel break elongation is 30%. AISI 316Ti stainless steel has an electrical resistivity of  $7.2e-005$  ohm-cm. In various industries and applications, such as plumbing, storage tanks, exhaust systems, furnace parts, heat exchangers, chemical plants, bellows, chimney and stack liners, etc., AISI 316Ti stainless steel is used.