



Object Detection And Tracking In Azure Machine Learning

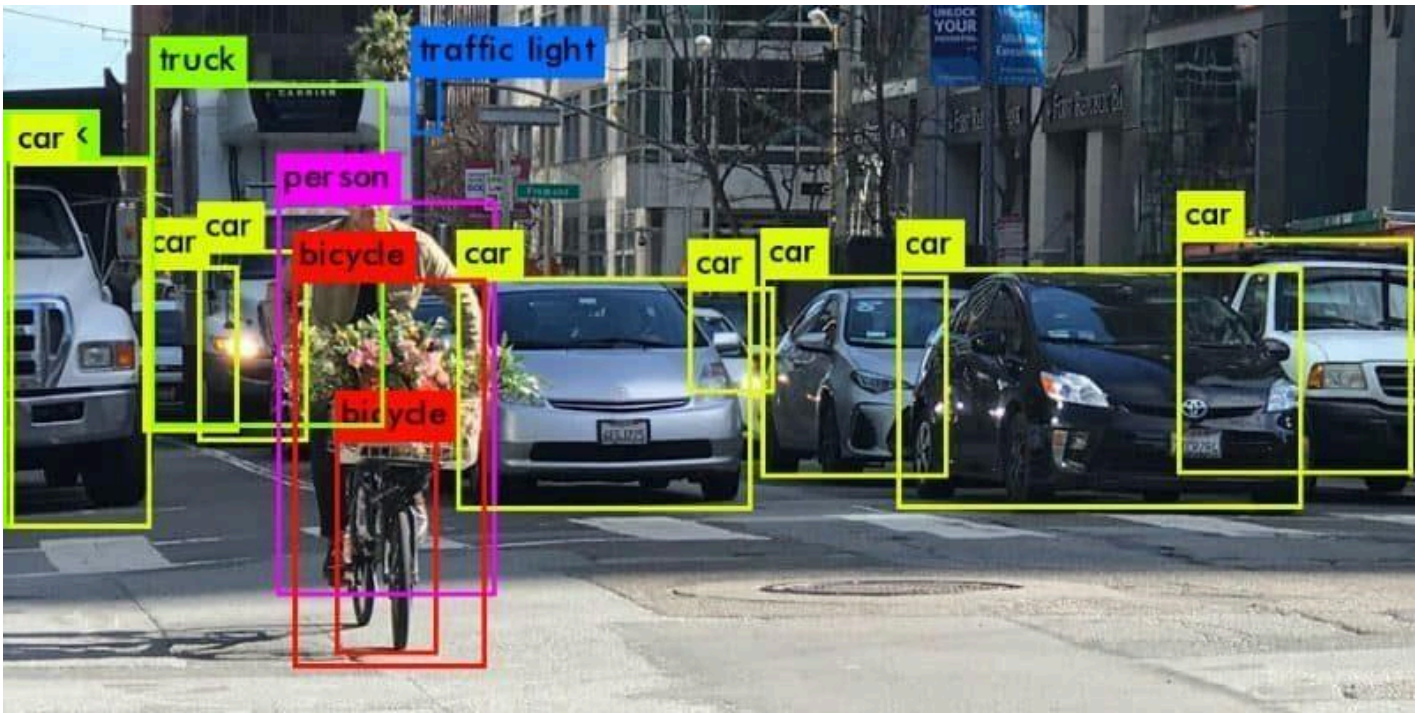
Machine learning is a subset of **artificial intelligence** where statistical methods are used to help a computer improve at a task with training and experience. **Object Detection and Tracking in Machine Learning** are widely used in Computer Vision. We can also deploy this Technology on the cloud with the help of various cloud vendors like **Microsoft Azure**.

[Object Detection in Azure Machine Learning](#)



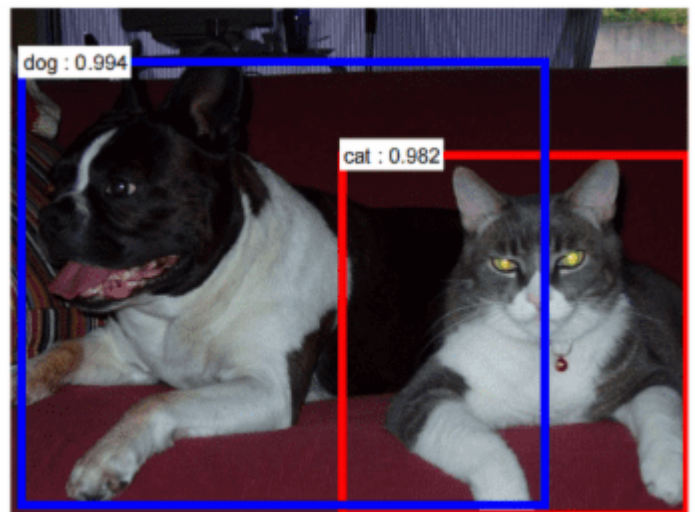
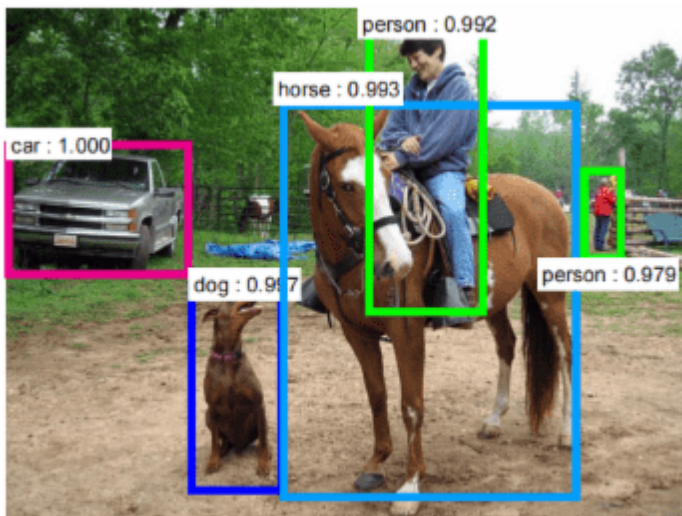
Overview Of Object Detection And Tracking

Object Detection and Tracking in Machine Learning are among the widely used technology in various fields of IT industries. Object identification is a type of **AI-based** PC vision in which a model is prepared to perceive singular kinds of items in a picture and to distinguish their area in the picture. An item can be a **face**, a **human**, a line of **individuals**, as well as a **product** on an assembly line.



Object Detection:

Object detection is a technology related to computer vision and image processing that deals with **detecting and locating objects** of a certain class (such as **humans, buildings, or cars**) in digital images and videos.



Object Tracking:

Object tracking is a field that can help to track **moving objects** when they move across several video frames with the help of Machine-learning. In Machine-learning accuracy and analysis power of object detection vastly improved. Objects can be people, but may also be animals, vehicles, or other objects of interest such as the ball in a game of soccer.



Object Detection On Azure

The **Custom Vision** cognitive service in Azure is used to create object detection models on the azure cloud. This meets the needs of many computer vision scenarios and doesn't require expertise in deep learning and a lot of training images.

We can use the following types of resource to create an Object detection model

- **Custom Vision**: A dedicated resource for the custom vision service, which can be either a **Training** or a **Prediction** resource.
- **Cognitive Services**: A general cognitive services resource that includes Custom Vision along with many other cognitive services. We can use this type of resource for **Training, Prediction, or both**.