



## Sink tap

### Are You Choosing a Sink Tap?



#### [KITCHEN](#)

5 minute read

Although a new sink tap doesn't really seem as high-tech as a stove or a microwave, it actually has the ability to either enhance or ruin the aesthetic of your kitchen. The overall visual impact of your choice of sink is significant, and even minor things like a stand-out faucet can draw attention.

## Matching Tap Type for Sinks



1. First of all, get the proportions correct; a tiny little single-lever sink tap won't fit in a sink with a Belfast depth, and a spray option on a tap will make a small, shallow bowl too splashy. If you have a double sink, make sure a swan neck tap can reach both bowls without difficulty.
2. Secondly, consider the shade and texture. A brushed steel faucet will clatter if you have a bowl made of shiny stainless steel; nevertheless, you should complement it with a polished finish tap. A brushed one, on the other hand, will contrast beautifully with most stone composite colours.
3. Lastly, design. The team like items together. The stunning Black Rhone tap creates a stylish statement when paired with a black or white granite sink, while a Royal swan neck tap with handles is ideal with your classic Belfast sink.

But as we already mentioned, everyone has a favourite kind of tap. Select the option that appeals to you the most to make washing dishes a sheer delight.

## Choosing a Tap?



Because many of us, whether we like to admit it or not, are quite fussy about the types of taps we enjoy. While some have strong opinions regarding single levers or two lever handles, other individuals chose separate taps for mixers. What about a tall, arched tap to draw attention to your sink? Or do you prefer a minimalist design? There are also sink tap with extra features like microfiltration or spray capabilities to add to the mix.

**WHITE MACAUBAS  
GRANITE**

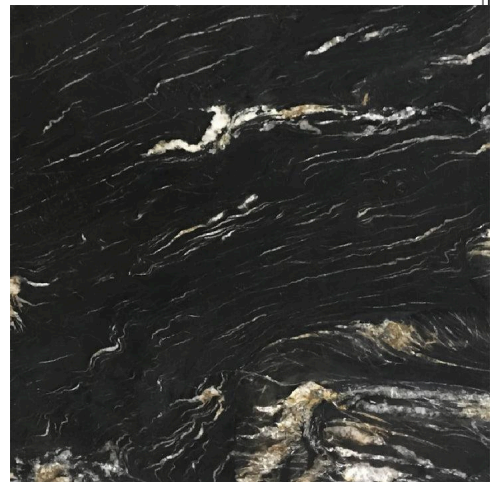


**ZANZALA  
GRANITE**



[Get a Quote](#)

**BELVEDERE  
QUARTZITE**



## Wall Mixer Tap Sink

---



Homeowners in the UK frequently use wall sink mixer taps, which are also referred to as wall-mounted kitchen sink mixers. It feels more organised when the mixer is kept away from the sink or work surface.

## Deck Sink Mixer Tap



Deck sink mixer taps, commonly referred to as deck-mounted mixers, function admirably on both high and low-pressure water systems. For your knowledge, the opening diameters are typically 180 cm apart.

## Pillar Type Kitchen Tap



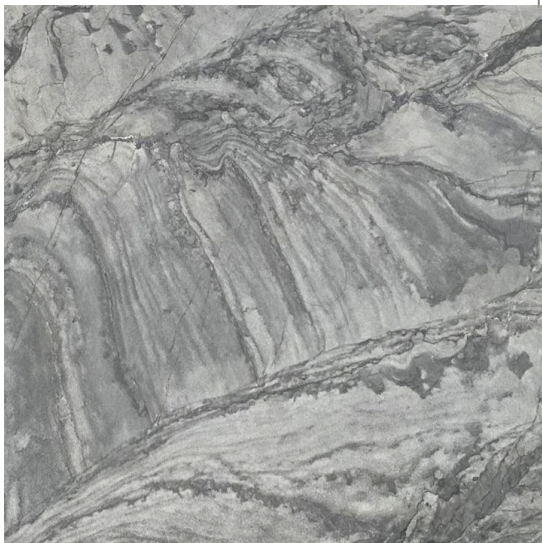
In utility sinks, kitchen pillar taps are frequently used. In situations where mixing hot water with cold mains water pressure is impractical due to low hot water pressure, they are also implemented.

## Mixer Tap



The most popular form of sink mixers are monobloc models, which feature a conventional 35mm opening for the sink and can also be directly mounted to a worktop. They are offered for both high and low-pressure settings.

**ADAMANTIUM  
QUARTZITE**



[Get a Quote](#)

**IVORY SILK  
GRANITE**



[Get a Quote](#)

**BIANCO  
ARIZONA  
QUARTZ**



[Get a Quote](#)

## Disc Type Taps



This sink tap has its name derived from the ceramic discs that are located inside the tap mechanism, much like a monobloc tap type. The discs regulate how much water is discharged and flows from the tap.

The discs are fitted in alignment and include tiny pores that allow water to flow past. But occasionally, filth and grit can get caught in between. As a result, this sort of tap may require frequent replacement or maintenance.



## Three Way Mixer Sink Tap



These are hot taps that operate normally; the cold tap contains typical hard water; and when turned the other way, produces filtered water. They are also referred to as tri flow kitchen sink tap or three-way mixers.

## Pull Out Spray Kitchen Sink Mixers



You will really need a high-pressure water system to be satisfied with a pull-out spray mixer. There are some that will function on as little as 0.5 bar, but for you to be sincerely satisfied with the result we recommend a minimum pressure of 1.0bar for most. Pull-out spray kitchen sink mixers are becoming more and more popular because they have a commercial background and are very practical in modern kitchens.

## Single Lever Mixer Tap for Sink



Because you can turn them on and off and mix the water with a single lever monobloc mixer, they are widely chosen.

## Bib Taps

Bib taps can be built into the wall or positioned on the sink as a sink tap or worktop with the installation of upstands.

## Cold Water Filter Tap

Filter taps, which are often a little bit smaller in size, are used in association with another mixer tap when using cold water filters.

CREAM TINY SPARKLE QUARTZ	NIWALA YELLOW LIMESTONE	MOCCA CREME MARBLE
---------------------------------	----------------------------	-----------------------



[Get a Quote](#)



[Get a Quote](#)



[Get a Quote](#)

## Compression Washer Taps

Compression washer taps, also called washer taps, have a pillar faucet that is operated by a twisting handle and are ideal for do-it-yourself projects. The washer within regulates how much water is released, as the name implies.

## Ball Type Taps

Ball taps frequently develop leaks more easily, which is an issue. Despite this drawback, they are quite simple to handle thanks to the ball that rests within the tap system. You can simply switch from hot to cold water, as well as manage the flow of water from the faucet.

## Cartridge Taps

This style of faucet is a combination model and has a tap lever. You can change the water's temperature by moving it from left to right, and you can change the water's flow by sliding something from top to bottom. Strong streaming or entirely off are both options.

You reading this article means your kitchen or bathroom renovation planning is going on. Do check out these [stone collections](#), they have been sourced from the best suppliers in the world.

WARWICK RUBI  
GRANITE

SALINAS WHITE  
GRANITE

CALACATTA  
SINFONIA QUARTZ



[Get a Quote](#)



[Get a Quote](#)



[Get a Quote](#)

Send Your Stone or Worktop Inquiry [Here](#) and Get a Free Quote.