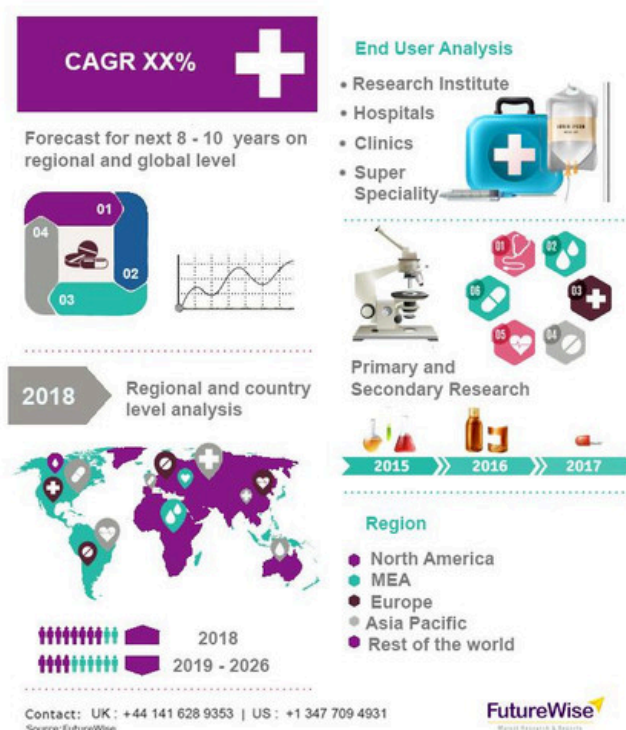




Computed Tomography (CT) Scanners Market Analysis, Size, Share, and Forecast 2031



The [Computed Tomography \(CT\) Scanners Market](#) in 2023 is US\$ 7.52 billion, and is expected to reach US\$ 11.91 billion by 2031 at a CAGR of 5.90%.

FutureWise Research published a report that analyzes Computed Tomography (CT) Scanners Market trends to predict the market's growth. The report begins with a description of the business environment and explains the commercial summary of the chain structure. Based on the market trends and driving factors presented in the report, clients will be able to plan the roadmap for their products and services taking into account various socio-economic factors.

Additionally, it illustrates the corporate profiles and situation of competitive landscape amongst numerous associated corporations including the analysis of market evaluation and options associated with the worth chain. This Computed Tomography (CT) Scanners research report provides insights on market overview, market segmentation, current and future pricing, growth analysis, competitive landscape and other such premium insights within the forecast period.

Request a Sample Report @ [Request for Computed Tomography \(CT\) Scanners Market Sample](#)

Computed Tomography (CT) Scanners Market Segmentation:

By Type

- Stationary CT Scanners
 - Floor vs Ceiling Mounted Stationary CT Scanners
- Portable CT Scanners

By Device Architecture

- C-Arm CT Scanners
- O-Arm CT Scanners

By Technology

- High-Slice CT
- Mid-Slice CT
- Low-Slice CT
- Cone Beam CT (CBCT)

By Application

- Human Applications
 - Diagnostic Applications
 - Cardiology Applications
 - Oncology Applications
 - Neurology Applications
 - Other Diagnostic Applications
 - Intraoperative Applications
- Veterinary Applications
- Research Applications

By End-User

- Hospitals and Diagnostic Centers
- Research Laboratories, Academic Institutes, and CROs
- Ambulatory Care Centers
- Veterinary Clinics and Hospitals

- Other End Users

By Region

- North America
- Europe
- Asia-Pacific
- Latin America
- Middle East and Africa

Key Market Players:

- GE Healthcare (A Subsidiary of General Electric Company)
- Siemens AG
- Koninklijke Philips N.V.
- Toshiba Corporation
- Hitachi Ltd
- Shimadzu Corporation
- Samsung Electronics Co., Ltd.
- Neusoft Corporation
- Medtronic PLC
- Shenzhen Anke High-Tech Co., Ltd.
- Accuray Incorporated
- Planmed Oy
- Koning Corporation
- Carestream Health, Inc.
- Pointnix Co., Ltd.

Please visit full report of the Computed Tomography (CT) Scanners market @ [Visit Computed Tomography \(CT\) Scanners Market](#)

Competitive Landscape:

- Tier one players - market players with a significant share of the market
- Tier two players
- Players with rapid growth
- New Entries

FutureWise Key Takeaways:

- Prospects for growth
- Analysis of SWOT
- Key trends
- Key Data-points affecting market growth

Objectives of the Study:

- To provide report with an in-depth analysis of the Computed Tomography (CT) Scanners Market By Type, By Device Architecture, By Technology, By Application, By End-User and By Region
- To offer data-points and comprehensive data on factors affecting the market (Opportunities, drivers, and industry-specific restraints)
- Analysis and forecasting of micro-markets, as well as the scope of the market.
- To predict the size and share, market forecast, in key regions — North America, Europe, Asia Pacific, and rest of the world
- To record and evaluate competition -mergers and expansions, product launches, and technological advancements within the market

Flexible Delivery Model:

- With our flexible delivery model, you will be able to suggest changes within the scope/table of content based on your requirement.
- Customization services are included with the purchase of any license type of report.
- Customization requests can be sent directly to: sales@futurewiseresearch.com

FutureWise Research:

Contact Person: Vinay T.

Email: sales@futurewiseresearch.com

Contact Number: UK: +44 1416289353 | US: +1 3477094931

Website: www.futurewiseresearch.com