

what is a dedicated server

A dedicated hosting service, dedicated server, or managed hosting service is a type of Internet hosting in which the client leases an entire server not shared with anyone else. This is more flexible than shared hosting, as organizations have full control over the server(s), including choice of operating system, hardware, etc. There is also another level of dedicated or managed hosting commonly referred to as complex managed hosting.

Complex Managed Hosting applies to both *physical dedicated servers*, *Hybrid server*, and *virtual servers*, with many companies choosing a hybrid (**combination of physical and virtual**) hosting solution. There are many similarities between standard and complex managed hosting but the key difference is the level of administrative and engineering support that the customer pays for - owing to both the increased size and complexity of the infrastructure deployment. The provider steps in to take over most of the management, including security, memory, storage and IT support.

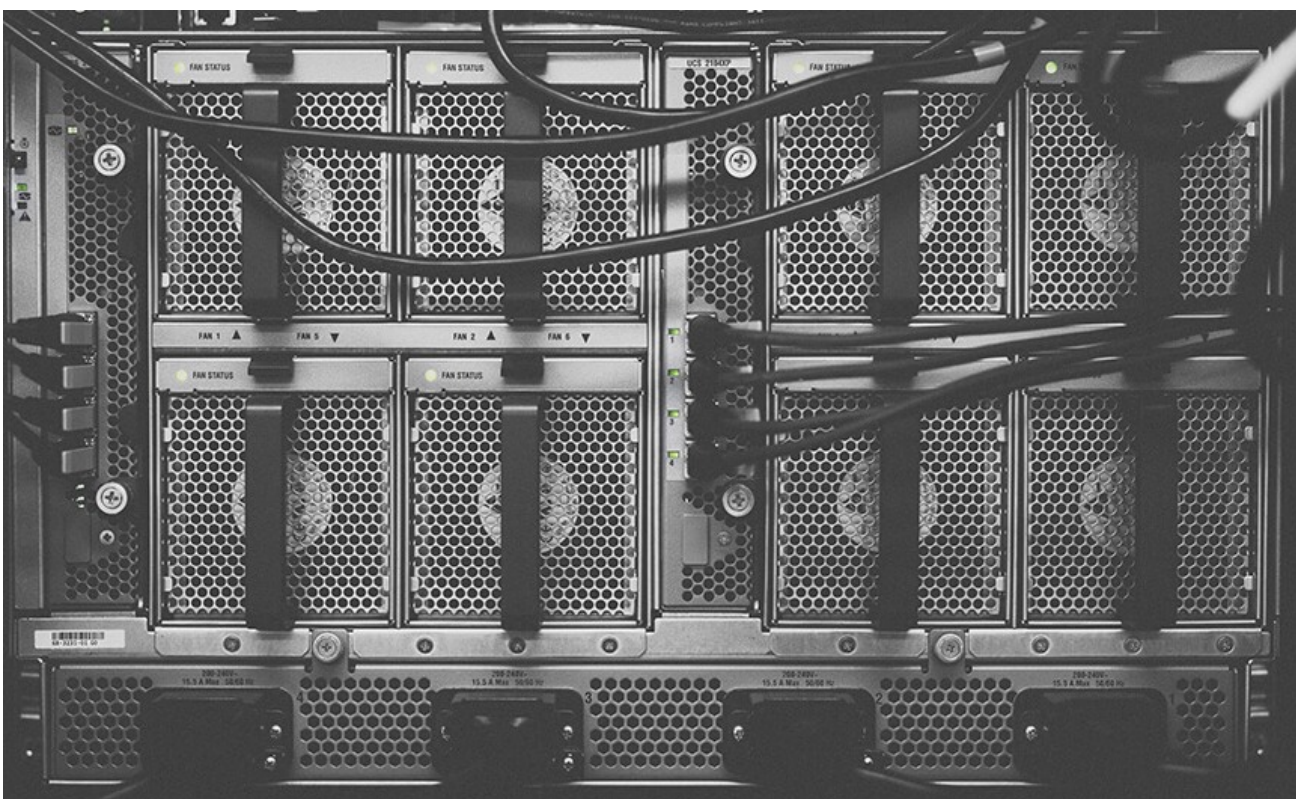


The service is primarily proactive in nature. Server administration can usually be provided by the hosting company as an add-on service. In some cases, a dedicated server can offer less overhead and a larger return on investment. Dedicated servers are most often housed in data centers, similar to colocation facilities, providing redundant power sources and HVAC systems. In contrast to colocation, the server hardware is owned by the provider and in some cases, they will provide support for operating systems or applications.

Using a dedicated hosting service offers the benefits of *high performance*, *security*, *email stability*, and *control*. Due to the relatively high price of dedicated hosting, it is mostly used by websites that receive a large volume of traffic.

Using a dedicated server with cPanel?

We will see below how to use a dedicated server with cPanel and install in just 5 steps to ensure that it can effectively accommodate all your web sites, then you can determine how to use a dedicated server with cPanel and that fully list the initial installation of your operating system and configuration of network interfaces, you must still take steps before your cPanel dedicated server is ready.



1. Complete the initial setup of the cPanel server.

This should take place when you log in for the first time, most people tend to browse only those options that are provided by default in many cases that's fine, however doing so will find useful options which over time will make your work much easier.

Check that the hostname and the primary and secondary [name servers](#) are correct, cPanel will try to configure most of these elements, based on the name of the host that are located in your initial configuration, then you must ensure that you have set up an email address Contact for your cPanel dedicated server, this will be useful to find out how to use a [dedicated server](#) with cPanel avoiding the inconvenience that may arise. Using a dedicated server with cPanel

2. Executes updating Apache.

This step is essential to set up a cPanel dedicated server, since there are the types of PHP scripts and commands you can use in your web page, learning how to use a dedicated with cPanel server is pretty easy, all you have to do is check or uncheck the boxes corresponding to the PHP version, you should not close the browser window while carrying out the process.

3. Prepares packages for your server accounts.

Carried out this work as a quick and easy way to ensure that your sites will not consume all the resources of cPanel dedicated server, you can do it from the "Package Manager" in WHM, and leave the resources available to other sites.

4. know the WHM Security Center.

This is carried out infrequently, however, I realize it will allow you to maintain a higher level of security for your dedicated server cPanel login there through section go to "**Security - Security Center**", usually dedicated servers bring disabled all your options, so you know them and review them that can help you to enable or disable various functions as you need it.

5. Sets backups of your dedicated server.

Developing a good backup is vital for everyone, be sure to create them on your own dedicated server, fortunately, discover how to use a dedicated server with cPanel for this purpose is very easy, you just log into WHM and go to section "*Backup - Configure Backup*" and check the Enabled or Enable checkbox.