



Slate

Slate Stone and its Uses for Home & Public Places

MATERIALS



Slate; Thanks to the Industrial Revolution, by default, when anybody thinks of a slate, their mind is programmed to gather images of Slate roofs and Fireheaths. But even after about two hundred years later, slate roof tiles remain highly valuable and on demand for their strength and beauty.



What is a Slate Stone?



Slate is a highly-grained metamorphic rock that can be easily divided into thin slabs and plates but does not exhibit significant compositional stratification. It typically results from mudrock undergoing low-grade regional metamorphism. The rock produced by this modest metamorphism has a distinctive slaty cleavage, in which the fresh cleavage surfaces seem dull, and the individual mineral crystals are still minute in size. In contrast, the second grade of metamorphic rock made from mudstone, phyllite, has silky cleft surfaces. Any sedimentary structures present in the initial mudrock have no bearing on the direction of cleavage, which instead corresponds to the direction of regional compression. Check out these [slate slabs](#).

Why is Slate Used?

Slate has been one of the most used construction materials since centuries for some of its brilliant characteristics like:

- **Fire Resistant Slate**



Slate is much more fire resistant and able to sustain temperatures higher than many metals. It works well for surfaces like floors and roofs because it can withstand extreme temperature changes.

- **Can Withstand Heat**



Due to its resilience to heat and fire, it is also a perfect choice for the kitchen counters where hot objects often come in contact.

- **Safe from Frost Damage**



Slate is especially well suited for roofing because it has a very low water absorption index—less than 0.4 percent—which makes it resistant to damage from frost. The embodied energy of natural slate, which needs no processing, is comparable favourably to that of other roofing materials.

<p>ITALIAN BLACK SLATE HONED</p>	<p>BRAZILIAN BLACK SLATE RIVEN</p>	<p>SAVERNAKE GREEN SLATE</p>
		
<p>£289.00 Get a Quote</p>	<p>£275.80 Get a Quote</p>	<p>£246.10 Get a Quote</p>

Where do I Use Slate in a Commercial Setting?

- **Snooker Tables**



Slate is smooth and reasonably priced, and it resists deformation due to moisture or absorption. Slate naturally separates into even, wider pieces, and it can also be sanded and polished to a smooth flat surface, making it excellent for snooker tables. Many manufacturers will offer a lifetime guarantee because of its durability. The slate is typically larger than the playing area and extends beneath the rails in a high-quality product, giving the surface more robustness. To enable stretching and stapling of the baize, it is typically inside a wooden frame.

- **Slate Garden**



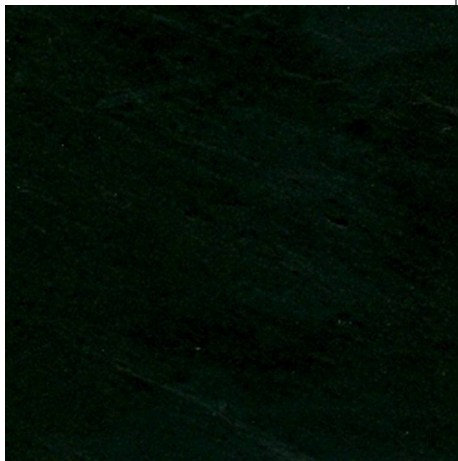
Slate chippings can be used for a variety of outdoor elements, such as ground cover, mulch, garden borders, and birdbaths. The spaces between slabs can also be filled with slate chippings.

- **Retail Floors**



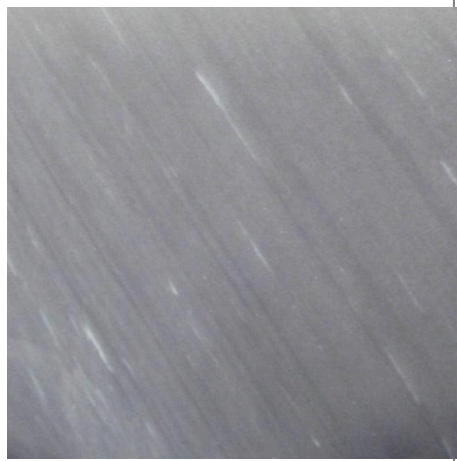
Uses of slate have increased rapidly in recent years, from retail stores to greenhouses. This is not surprising, really, as the blend of a traditional material with contemporary styling makes them a stunning and alluring option for both modern and traditional gardens or porches.

ITALIAN BLACK
SLATE



£269.20
[Get a Quote](#)

OCEAN BLACK
SLATE



£258.20
[Get a Quote](#)

ITALIAN BLACK
SLATE RIVEN



£275.40
Available Soon

Is Slate for Home?

Without any pause, yes, slate is definitely for homes. Slate is a very robust and inexpensive material to use in your home in a variety of places like:

Fire Hearths



Slate tile is the perfect material for your fireplace hearth if you favour a sleek, contemporary appearance. The rough slate is typically polished to a smooth surface and cut into exact squares to give it a more refined appearance.

Slate Floor

The same attributes that have made slate so suited for roofing also make it an outstanding choice for floors, particularly in spaces like kitchens, bathrooms, and occasionally swimming pools. Slate is strong, watertight, and stain-resistant.

Slate Wall Tiles

It makes sense that slate is suitable for walls if it can be used for floors. It can be used for chimney breast, low-maintenance splashback, and elegant panels to build the wet room of your dreams.

Slate Table

We advise going all out and choosing a full slate table with matching seats if you've already fallen in love with the look and feel of slate placemats or placemats.

Kitchen Worktops



Slate worktops combine the visual appeal of those options with the assurance that staining and discolouring won't be a problem, thanks to slate's non-porous surface, making them a popular alternative to natural stones like [granite](#) and [marble](#) for kitchen work surfaces. Although some users claim that you may place hot pans directly on a slate worktop, we always err on the side of caution and use a trivet or heat pad.

Slate Window Sills



Slate window sills are preferred because of their lovely aesthetics and durability. It's a great material for window sills in older buildings, but a straight-cut slate windowsill would look equally at home in a contemporary home and create a lovely rustic look. The slate can have drainage channels carved onto the underside to direct any run-off water, and they can be utilised both indoors and outside.

Slate roofs, Slate pathways, Slate Garden walkways, Fireheaths, and Floors.

If you are looking for a variety of natural and engineered stones for any of your projects, [these collections](#) will be really helpful.