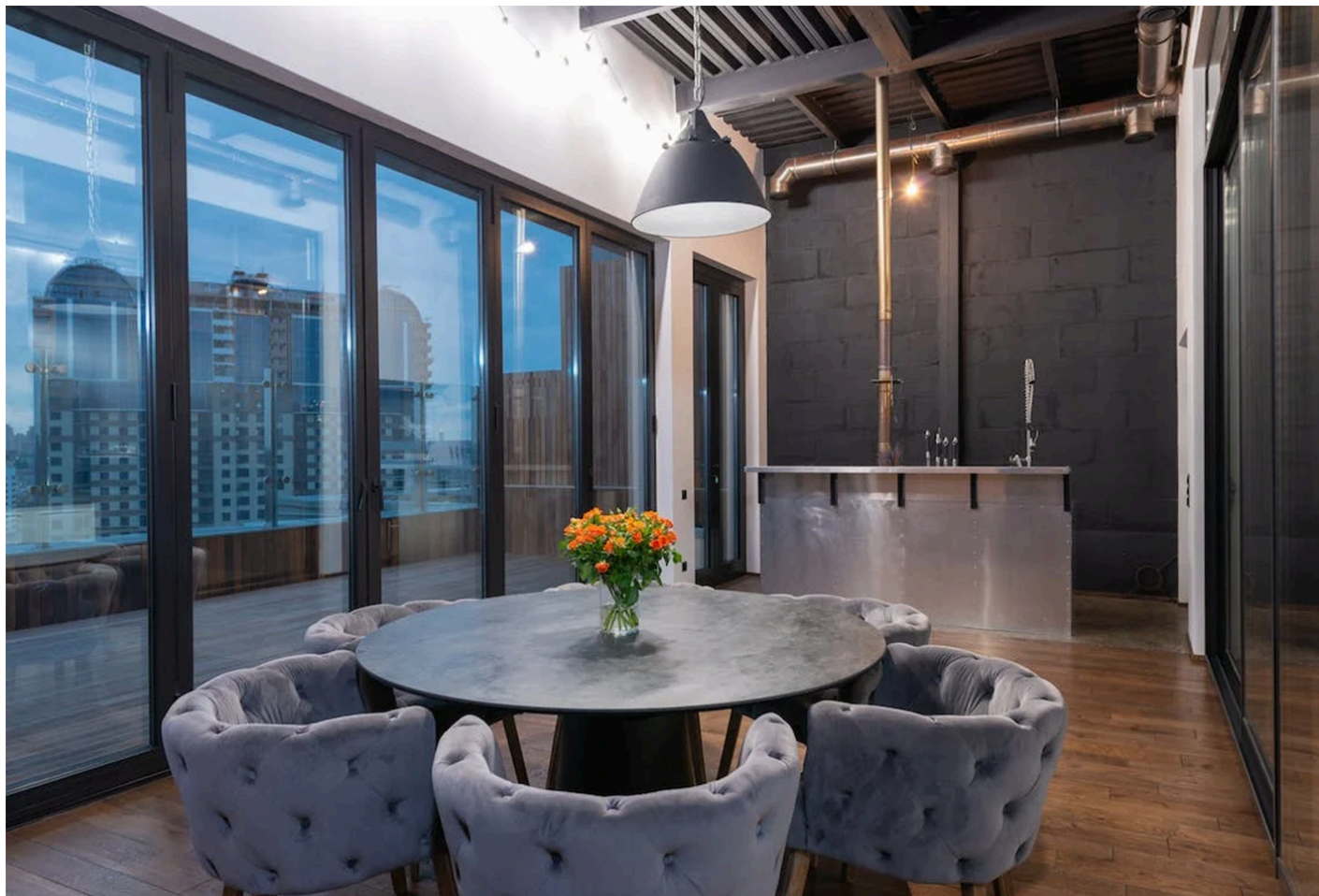




## Interior wall cladding

# Interior Wall Cladding; All About Designing Your Home

### [GUIDES](#)



Interior Wall cladding is basically an extra layer of material that is placed atop of another. The technique of layering materials on top of each other adds an additional layer of protection to your walls. Wall Cladding is commonly used as a decorative feature on your walls, but it is also a fantastic hygienic wall covering that is commonly used in industries such as medical, healthcare, and food processing, as it does not retain bacteria, unlike ordinary tiles. Because [wall cladding](#) is a non-structural material, it will not influence the stability or integrity of your structure and is, for the most part, a permanent addition in order to add an artistic element to your walls.

# Interior Wall Cladding Designs



## As a Heavy Accent

Not ready to cover a complete wall with panelling? Begin with little steps, such as panelling the back of a shelf to add interest to elegantly placed centerpieces. Take inspiration from this living room in a modern home, where the designers worked hard to achieve a warm, lived-in feeling. A paneled bookshelf works very nicely in the home.

## Bed Head as a Statement

This master bedroom in a renovated home makes the most of the natural sunlight coming in from the window by creating an out-of-the-ordinary bedhead. A tiny wall has been transformed into a useful shelf, eliminating the need for bedside tables.

## To Draw the Eye to a Special Piece

A stunning marble fireplace has been made the focal point of this living room in this luxurious coastal home. The wall paneling draws the eye to the feature while adding dimension to the wide negative space above the fireplace.



## To Create a Retro Look

To be stylish, timber panelling does not need to be painted to within an inch of its life. Take inspiration from the natural wood panelled walls in this retro-inspired seaside property. Using lumber in this way also produces a "cabin" vibe that is cocooning and warm, making it ideal for a bedroom.

## To Create a Modern Minimalist Kitchen

There are only a few places in the kitchen where you may add a little glitter: the tapware, the appliances, and the cabinet hardware. However, choosing minimal or no cabinet hardware is more fashionable than ever.

TRIGAXES ANTIQUE MARBLE	GREY SPARKLE QUARTZ	HOXTON QUARTZ
		
<a href="#">Get a Quote</a>	<a href="#">Get a Quote</a>	<a href="#">Get a Quote</a>

## What Factors Should Be Considered When Choosing Popular Interior Wall Cladding



Before you begin to shortlist interior cladding material options, make a list of your criteria; this will make it a lot easier to select those that will remain a valuable option for many years to come. We recommend that you consider the following:

### **Budget:**

Cladding is an investment, but it doesn't mean you have to go crazy. Consider those that offer a reasonable price without sacrificing quality.

### **Insulation:**

If you require additional insulation, you should consider using specially designed cladding that includes an insulation layer. Although this may increase the cost of your cladding, it will improve efficiency and, as a result, save your electricity costs.

### **Maintenance:**

Choosing a cladding material that requires frequent maintenance is not only time-consuming but also costly, particularly if you want to keep your interior design in excellent condition. Instead, choose those that only need to be cleaned a few times a year.



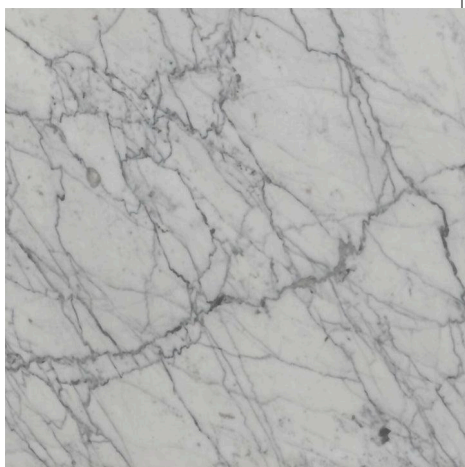
## Appearance:

When it comes to inside cladding, the appearance of your building can make or break its aesthetics. Always keep your interior design in mind and try to match your cladding to it; this also helps to long run your interior and reduces the need for future upgrades.

## Lifespan:

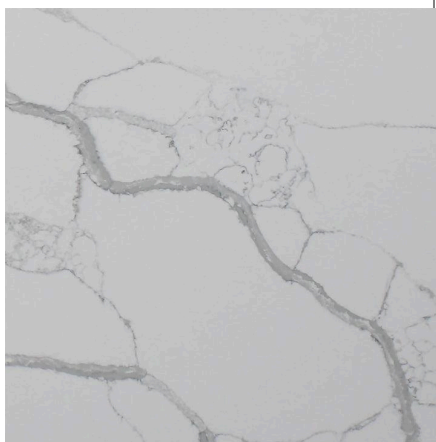
Each cladding material has a different expected lifespan and level of durability. If you know your building will be exposed to a substantial amount of wear and tear, you should select materials that are guaranteed to last.

### CARRARA GIOIA MARBLE



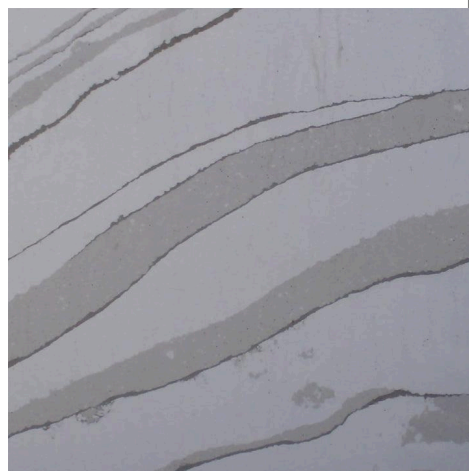
[Get a Quote](#)

### CALDIA QUARTZ



[Get a Quote](#)

### BORGHINI QUARTZ



[Get a Quote](#)

## Benefits of Best Interior Wall Cladding



### 1. It is Less Expensive

Interior cladding is now the most popular and cost-effective solution to create tile or brick look walls in both residential and business environments. Not only are the product materials less expensive, but they also save a significant amount of time when compared to traditional methods of installation.

### 2. Design Flexibility

The wall panels can be installed horizontally, vertically, or at various angles. No more lining up edges to ensure that the pattern matches; you can mix and match from many of our products, and we have a wide variety of designs to choose from.

### 3. Durability

Even after years of use, our cladding will look as good as the day you got it. They are stain and scratch resistant, as well as totally water-resistant, and are tough enough to deal with daily living, suggesting that they will last for years in household use.

### 4. Very Simple to Install



They are lightweight and come in short lengths. There are no special tools or expertise required to install them.

## 5. A Variety of Styles

This lighter, easier to clean, and simpler to install alternative to tiles is also available in a wide range of colours and styles. One of the better parts about interior cladding is that you can mix and match the different types to create unique styles for any room in the house.

## 6. Ease of Maintenance

They are simple to clean. Wipe with warm water and a little dishwashing liquid and they will appear as good as new every day. They require far less time to clean than traditional materials such as tiles, wood, or bricks.

SUPER WHITE /  
PORTOBELLO  
MARBLE



[Get a Quote](#)

FANTASY BROWN  
MARBLE



[Get a Quote](#)

BREEZE PEARL  
QUARTZ



[Get a Quote](#)

## Cladding in Stone



This cladding is considered to be the most natural and fresh-looking. This cladding's distinct texture and tone variety make it ideal for interior design, and many people use it in their kitchens and living rooms. It makes an excellent feature wall. Stone cladding can be installed over any steel or concrete surface and is quite lightweight.



## Cladding Made of Wood



Wooden cladding, like stone cladding, adds a natural yet modern aesthetic to any interior. Because there are so many distinct kinds of this type of cladding, you will never be at a loss for options when choosing wooden cladding.

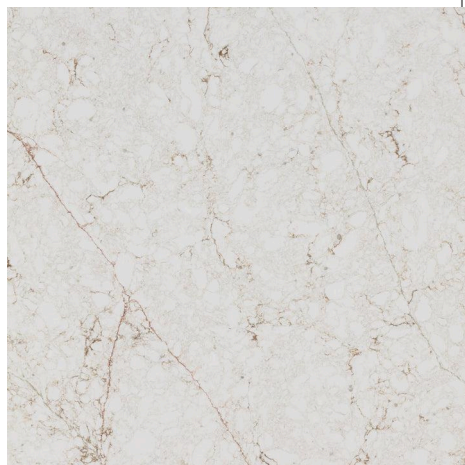
Of course, this cladding is also eco-friendly; as a renewable, sustainable, and recyclable material, it is currently being used in eco-homes all over the world.

## Cladding Made of Metal



This sort of cladding is extremely popular in commercial properties, and many people are now choosing it for their houses as well. Metal cladding is now available in a broad variety of forms and finishes, so whatever your taste, there is a metal cladding choice to complement it. The majority of metal cladding panels are constructed of steel or aluminium, and they are quite durable as well as surprising simple to carry and install.

**FOREST SUGHERO  
QUARTZ**



£372.60  
[Get a Quote](#)

**ROYAL STATUARIO  
PORCELAIN TILES**



£11.46

**PLANET HONEY  
GALAXY QUARTZ**



£372.60  
[Get a Quote](#)



## Interior Wall Cladding Ideas



## V-Groove Panelling

V groove panelling is a type of cladding system that features broader planks and is great for covering big areas. V groove panelling is characterized by its slightly curved edge, which fits into adjoining planks or sheets via a tongue and groove joint. V groove panelling looks especially glamorous when applied on painted wood, offering a sophisticated yet rustic edge to a room.

## Shiplap

Shiplap is another cladding technology in which individual planks (typically wood) connect to provide a homogeneous surface with almost no gaps. Shiplap cladding is quite popular, particularly in warmer areas where the space between planks allows for natural thermal expansion. Because of its streamlined shape, shiplap cladding is simple to install. It is frequently one of the least expensive types of cladding available, depending on the material used. Shiplap cladding is easily painted or stained.

## Timber

Timber is one of the greatest materials for interior cladding. It first and foremost brightens the space. Timber gives a rustic warmth that can liven up even the drab best modern colour palette. Timber has a wide range of design options since it can be painted or stained, allowing you control over the colour and texture. Dark colours look especially classy as a feature wall made of wood. Because it is a sturdy and durable material, timber is also one of the best walls to put shelves to.

## Subway Tile

It is a low-cost and simple-to-install element that looks best in kitchens or bathrooms, where it offers a textured layer. Subway tile is becoming increasingly popular, and there are numerous textures and colours to choose from. White subway tile is very popular in kitchens, while bolder designers choose a more polished mosaic tile.

## Natural Stone

It is one of the most expensive materials, yet a natural stone feature wall has a magical quality that no other material can match. Natural stone complements almost any aesthetic, creating a lovely contrast with clean contemporary colour schemes while also blending in with the raw simplicity of rustic architecture.

### METALLO QUARTZITE



[Get a Quote](#)

### MOCCA CREME MARBLE



[Get a Quote](#)