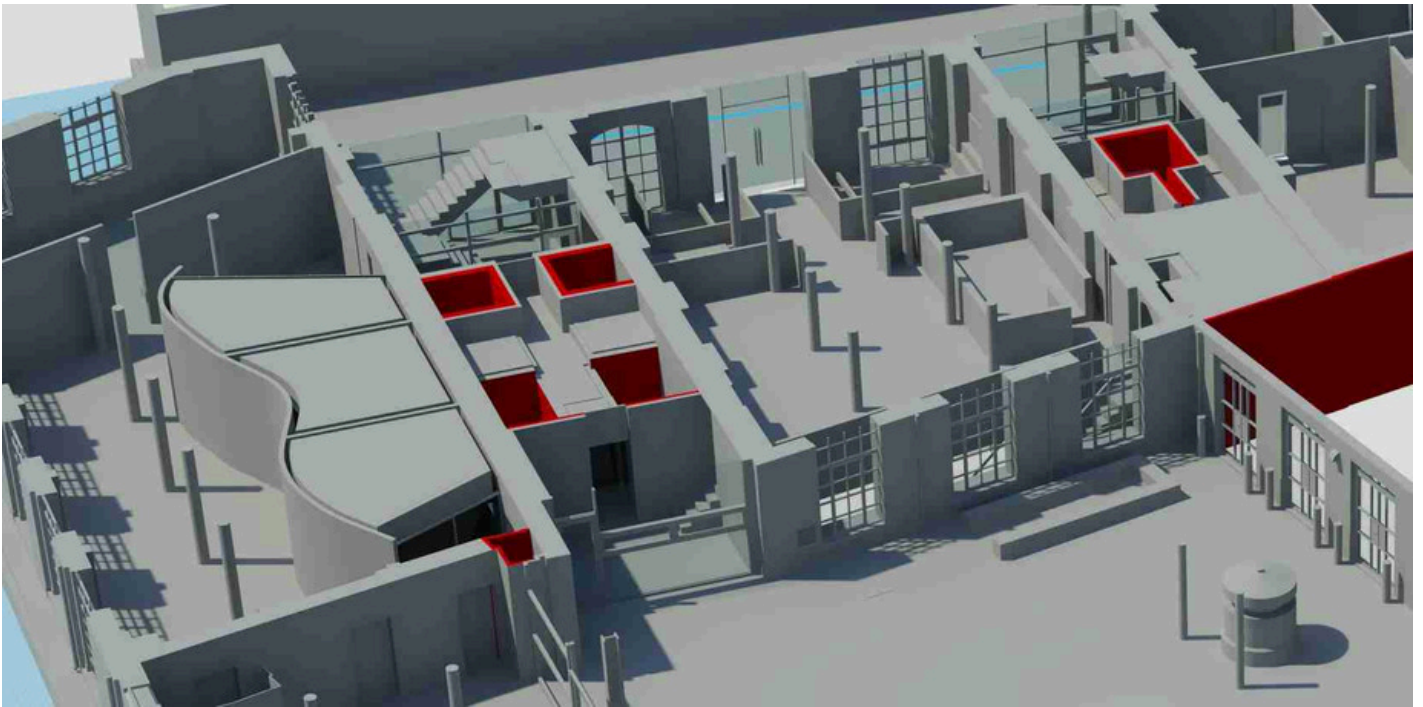




3D Laser Scanning Chipping Sodbury



[3D Laser Scanning Chipping Sodbury](#)

South West Surveys has worked on a huge variety of projects ranging from residential extensions and renovations to highly renowned traditions projects. We can generate as-built 3D designs for BIM or visualizations functions. Our experience has made it possible for us to model pump motor houses (which include pipework) and also have a laser scan of the shown sculpture, then transform it in a solid mesh model to become used forward and duplicated.